



**2019 Small Capacity Constraints II**  
**Solicitation Number: CO-00523**  
**Job No.: 19-4525**

**ADDENDUM 3**  
**May 20, 2022**

To Bidder of Record:

This addendum, applicable to work referenced above, is an amendment to the bid proposal, plans and specifications and as such will be a part of and included in the Contract Documents. Acknowledge receipt of this addendum by entering the Addendum number and issue date on the space provided in submitted copies of the bid proposal.

**ANSWERS TO QUESTIONS**

This Addendum addresses SAWS responses to questions 3 and 4 described in Addendum No. 2.

**CHANGES TO SPECIFICATIONS**

- BID PROPOSAL – REMOVE the Bid Proposal in its entirety and REPLACE with the attached version. The Bid Proposal was modified to include additions of quantities for bidding related to guardrail, fencing, and flowable fill items in response to questions outlined in Addendum No. 2.**
  - Bid Item 299.7 Flowable Fill was modified from quantity 271 CY to 296 CY in accordance with the changes to the plans outlined in this Addendum.
  - Bid Item 405 PEDESTRIAN RAILING was added and all subsequent bid items were re-numbered accordingly.
  - Bid Item 505.1 Concrete Rip-Rap was modified to add "(5-inches thick)" to the bid item, in accordance with COSA Specification 505.1.
  - Bid Item SP507 Remove and Replace Fence was modified from quantity 230 LF to 1,607 LF to account for all fence replacements throughout the project.
  - Bid Item 509.1 METAL BEAM GUARD RAIL was added and all subsequent bid items were re-numbered accordingly.

**Bidders shall use the revised Bid Proposal attached to this Addendum. Failure to do so may result in the bid being found non-responsive.**

**CHANGES TO PLANS**

- Remove and replace the following sheets with the attached sheets dated 5/17/2022. Notable Changes include additions of quantities for bidding related to guardrail, fencing, and flowable fill items in response to questions outlined in Addendum No. 2.
  - Sheet G4 (page 4) – Project Quantities
  - Sheet C18 (page 22) – Site 1 COSA Drainage Channel Plan and Profile BL A Sta 0+00 to 3+50
  - Sheet C19 (page 23) – Site 1 COSA Drainage Channel Plan and Profile BL A Sta 3+50 to 7+00
  - Sheet C20 (page 24) – Site 1 COSA Drainage Channel Plan and Profile BL A Sta 7+00 to 11+00
  - Sheet C21 (page 25) – Site 1 COSA Drainage Channel Plan and Profile BL A Sta 11+00 to Sta 14+50
  - Sheet C22 (page 26) – Site 1 COSA Drainage Channel Plan and Profile BL A Sta 14+50 to Sta 18+50
  - Sheet C23 (page 27) – Site 1 Vance Jackson Road Plan and Profile BL A Sta 18+50 to Sta 21+10
  - Sheet C24 (page 28) – Site 1 Oak Creek Apartments Plan and Profile BL A Sta 21+10 to Sta 25+03

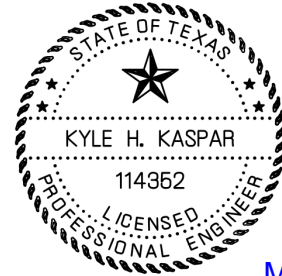
- Sheet C28 (page 32) – Site 2 UPRR Adj Plan and Profile BL E Sta 0+00 to 3+80
- Sheet C30 (page 34) – Site 2 Alley and Catalina Ave to UPRR Plan and Profile BL E Sta 6+88 to 10+20
- Sheet C31 (page 35) – Site 2 UPRR ROW and Alley Plan and Profile BL E Sta 10+20 to Sta 13+70
- Sheet C32 (page 36) – Site 2 Alley: UPRR to Santa Paula Plan and Profile BL E Sta 13+70 to Sta 15+98

**END OF ADDENDUM**

This Addendum, including these 2 (two) pages, is 22 (twenty-two) pages with attachments in its entirety.



Kyle H. Kaspar, P.E.  
Jones & Carter, Inc.



May 20, 2022

Texas Board of Professional Engineers and Land Surveyors Reg. Nos. F-23290 & 10046100

## BID PROPOSAL

PROPOSAL OF \_\_\_\_\_, a corporation  
a partnership consisting of \_\_\_\_\_  
an individual doing business as \_\_\_\_\_

### THE SAN ANTONIO WATER SYSTEM:

Pursuant to Instructions and Invitation to Bidders, the undersigned proposes to furnish all labor and materials as specified and perform the work required for the project as specified, in accordance with the Plans and Specifications for the following prices in the bid proposal to wit:

**PLEASE SEE ATTACHED LIST OF BID ITEMS.**

\_\_\_\_\_  
BIDDER'S SIGNATURE & TITLE

\_\_\_\_\_  
FIRM'S NAME (TYPE OR PRINT)

\_\_\_\_\_  
FIRM'S ADDRESS

\_\_\_\_\_  
FIRM'S PHONE NO. /FAX NO.

\_\_\_\_\_  
FIRM'S EMAIL ADDRESS

The Contractor herein acknowledges receipt of the following: Addendum Nos. \_\_\_\_\_

OWNER RESERVES THE RIGHT TO ACCEPT THE OVERALL MOST RESPONSIBLE BID.

The bidder offers to construct the Project in accordance with the Contract Documents for the contract price, and to complete the Project within **210** calendar days after the start date, as set forth in the Authorization to Proceed. **The bidder understands and accepts the provisions of the contract Documents relating to liquidated damages of the project if not completed on time.**

Complete the additional requirements of the Bid Proposal which are included on the following pages.

### Statement on President's Executive Orders

Has your firm previously performed work subject to the President's Executive Orders Numbers 11246 and 11375 or any preceding similar executive orders (Numbers 10925 and 11114)? Yes  No

- (1) Are you, Contractor, held or controlled by individuals who are citizens of China, Iran, North Korea, Russia or a country designated by the Governor of the State of Texas pursuant to Texas Government Code Chapter 2274?  
Yes  No
- (2) Are you, Contractor, held or controlled by a company or other entity, including a governmental entity, that is owned or controlled by citizens of or directly controlled by the government of China, Iran, North Korea, Russia or a country designated by the Governor of the State of Texas pursuant to Texas Government Code Chapter 2274?  
Yes  No
- (3) Are you, Contractor, headquartered in China, Iran, North Korea, Russia or a country designated by the Governor of the State of Texas pursuant to Texas Government Code Chapter 2274?  
Yes  No

**BID PROPOSAL FOR 2019 SMALL CAPACITY CONSTRAINTS II**

Line No.	ITEM	DESCRIPTION	UNIT	QTY	UNIT PRICE	TOTAL PRICE
1	101.1	REMOVE SANITARY SEWER MANHOLE	EA	3	\$	\$
2	102.1	INTERMEDIATE DEMOBILIZATION AND REMOBILIZATION	EA	1	\$	\$
3	102.2	INTERMEDIATE DEMOBILIZATION BYPASS PUMPING EQUIPMENT RENTAL	DAY	3	\$	\$
4	102.3	INTERMEDIATE DEMOBILIZATION BYPASS PUMPING FUEL	DAY	3	\$	\$
5	102.4	INTERMEDIATE DEMOBILIZATION BYPASS PUMPING WATCH	DAY	3	\$	\$
6	103.1	REMOVE CONCRETE CURB (COSA SPEC)	LF	667	\$	\$
7	103.3	REMOVE CONCRETE SIDEWALK (COSA SPEC)	SY	55	\$	\$
8	103.3	REMOVE CONCRETE DRIVEWAY (COSA SPEC)	SY	344	\$	\$
9	104.1	STREET EXCAVATION (COSA SPEC)	CY	703	\$	\$
10	202.1	PRIME COAT (COSA SPEC)	GAL	130	\$	\$
11	203.1	TACK COAT (COSA SPEC)	GAL	186	\$	\$
12	205.4	HOT MIX ASPHALTIC CONCRETE PAVEMENT, TYPE D (2" COMPACTED DEPTH) (COSA SPEC)	SY	878	\$	\$
13	205.3	HOT MIX ASPHALTIC CONCRETE PAVEMENT, TYPE C (3" COMPACTED DEPTH) (COSA SPEC)	SY	986	\$	\$

14	206.1	ASPHALT TREATED BASE (ATB) (10" COMPACTED DEPTH) (COSA SPEC)	SY	878	\$	\$
15	206.1	ASPHALT TREATED BASE (ATB) (12" COMPACTED DEPTH) (COSA SPEC)	SY	986	\$	\$
16	208.1	SALVAGING HAULING & STOCKPILING RECLAIMABLE ASPHALTIC PAVEMENT (2" DEPTH) (COSA SPEC)	SY	878	\$	\$
17	208.1	SALVAGING HAULING & STOCKPILING RECLAIMABLE ASPHALTIC PAVEMENT (3" DEPTH) (COSA SPEC)	SY	986	\$	\$
18	209.2	CONCRETE BUS STOP PAD (COSA STANDARD DETAIL)	SY	548	\$	\$
19	299.7	FLOWABLE FILL	CY	296	\$	\$
20	405	PEDESTRIAN RAILING (TY PR11) (TXDOT SPEC)	LF	5		
21	500.1	CONCRETE CURB (COSA SPEC)	LF	667	\$	\$
22	502.1	CONCRETE SIDEWALKS (COSA SPEC)	SY	55	\$	\$
23	503.1	PORTLAND CEMENT CONCRETE DRIVEWAYS (COSA SPEC)	SY	344	\$	\$
24	505.1	CONCRETE RIP-RAP (5-INCHES THICK) (COSA SPEC)	SY	1,260	\$	\$
25	SP507	REMOVE AND REPLACE FENCE	LF	1,607	\$	\$
26	509.1	METAL BEAM GUARD RAIL (COSA SPEC)	LF	588	\$	\$
27	515.1	TOPSOIL (COSA SPEC)	CY	176	\$	\$

28	516.1	BERMUDA SODDING (COSA SPEC)	SY	1,192	\$	\$
29	8000	TREE REMOVAL	EA	26	\$	\$
30	520.1	HYDROMULCHING (COSA SPEC)	SY	5,829	\$	\$
31	530.1	BARRICADES, SIGNS, AND TRAFFIC HANDLING - LOCATION 1 (COSA SPEC)	LS	1	\$	\$
32	530.1	BARRICADES, SIGNS, AND TRAFFIC HANDLING - LOCATION 2 (COSA SPEC)	LS	1	\$	\$
33	530.1	BARRICADES, SIGNS, AND TRAFFIC HANDLING - LOCATION 3 (COSA SPEC)	LS	1	\$	\$
34	530.1	BARRICADES, SIGNS, AND TRAFFIC HANDLING (OLD BROOKS)	LS	1	\$	\$
35	535.1	4-INCH WIDE YELLOW LINE (W/REFLECTORS) (COSA SPEC)	LF	500	\$	\$
36	535.15	WHITE YIELD DIAMOND	EA	5	\$	\$
37	535.2	4-INCH WIDE WHITE LINE (COSA SPEC)	LF	1,150	\$	\$
38	535.7	24-INCH WIDE WHITE LINE (COSA SPEC)	LF	40	\$	\$
39	540.1	TEMPORARY EROSION, SEDIMENTATION, AND WATER POLLUTION PREVENTION AND CONTROL	LS	1	\$	\$
40	550.1	TRENCH EXCAVATION SAFETY PROTECTION	LF	3,927	\$	\$
41	801	TREE PROTECTION	LS	1	\$	\$

42	848.6	8-INCH SDR-26 (ASTM D-3034) PVC SANITARY SEWER LINE (6'-10' DEPTH)	LF	42	\$	\$
43	848.6	10-INCH SDR-26 (ASTM D-3034) PVC SANITARY SEWER LINE (0'-6' DEPTH)	LF	1,101	\$	\$
44	848.6	10-INCH SDR-26 (ASTM D-3034) PVC SANITARY SEWER LINE (6'-10' DEPTH)	LF	1,311	\$	\$
45	848.6	10-INCH SDR-18 (AWWA C-900) PVC SANITARY SEWER LINE (6'-10' DEPTH)	LF	76	\$	\$
46	848.6	10-INCH SDR-26 (ASTM D-3034) PVC SANITARY SEWER LINE (>10' DEPTH)	LF	178	\$	\$
47	848.6	10-INCH SDR-13.5 (ASTM D-3350) HDPE SANITARY SEWER LINE (6'-10' DEPTH)	LF	111	\$	\$
48	848.6	12-INCH SDR-26 (ASTM D-3034) PVC SANITARY SEWER LINE (0'-6' DEPTH)	LF	175	\$	\$
49	848.6	12-INCH SDR-26 (ASTM D-3034) PVC SANITARY SEWER LINE (6'-10' DEPTH)	LF	41	\$	\$
50	848.6	12-INCH SDR-26 (ASTM D-3034) PVC SANITARY SEWER LINE (>10' DEPTH)	LF	30	\$	\$
51	848.6	15-INCH SDR-26 (ASTM D-3034) PVC SANITARY SEWER LINE (0'-6' DEPTH)	LF	237	\$	\$
52	848.6	15-INCH SDR-26 (ASTM D-3034) PVC SANITARY SEWER LINE (6'-10' DEPTH)	LF	598	\$	\$

53	848.6	21-INCH SDR-26 (ASTM D-3034) PVC SANITARY SEWER LINE (>10' DEPTH)	LF	7	\$	\$
54	851.4	EXISTING MANHOLE ADJUSTMENTS	EA	8	\$	\$
55	SP852.1	SANITARY SEWER MANHOLE (0'-6')	EA	3	\$	\$
56	SP852.3	EXTRA DEPTH MANHOLE (>6')	VF	5.2	\$	\$
57	853.6	FIBER-REINFORCED SANITARY SEWER MANHOLE - (4' DIAMETER)	EA	24	\$	\$
58	853.6	FIBER-REINFORCED SANITARY SEWER MANHOLE - (4' DIAMETER) DOGHOUSE CONSTRUCTION	EA	1	\$	\$
59	854.7	SANITARY SEWER LATERALS, SDR-26 (ASTM D-2241, 150 PSI)	LF	588	\$	\$
60	854.7	TWO-WAY SANITARY SEWER CLEAN-OUT	EA	40	\$	\$
61	856.7	JACKING & BORING	LF	675	\$	\$
62	856.7	24-INCH STEEL CASING (0.375-INCH THICK)	LF	861	\$	\$
63	856.7	24-INCH STEEL CASING (0.438-INCH THICK)	LF	350	\$	\$
64	856.7	30-INCH STEEL CASING (0.375-INCH THICK)	LF	20	\$	\$
65	856.7	10-INCH PVC SDR-26 (ASTM D-3034) CARRIER PIPE FOR BORING OR JACKING	LF	675	\$	\$
66	856.7	15-INCH PVC SDR-26 (ASTM D-3034) CARRIER PIPE	LF	20	\$	\$



67	858.5	CONCRETE ENCASEMENT, CRADLES, SADDLES, AND COLLARS	CY	75.8	\$	\$
68	862	GROUT ABANDONMENT OF SANITARY SEWER MAIN (<15" MAIN)	LF	448	\$	\$
69	862.5	ABANDONMENT OF SANITARY SEWER MAINS	LF	2,579	\$	\$
70	862.5	ABANDONMENT OF SANITARY SEWER MANHOLES	EA	8	\$	\$
71	865	SMALL DIAMETER BYPASS PUMPING - LOCATION 1 (COMPKEY 963908)	LS	1	\$	\$
72	865	SMALL DIAMETER BYPASS PUMPING - LOCATION 2 (COMPKEYS 984636 & 973231)	LS	1	\$	\$
73	865	SMALL DIAMETER BYPASS PUMPING - LOCATION 3 (COMPKEY 983400)	LS	1	\$	\$
74	865	SMALL DIAMETER BYPASS PUMPING - OLD BROOKS SITE	LS	1	\$	\$
75	866.6	SEWER MAIN PRE-TELEVISION INSPECTION (8" - 15")	LF	5,273	\$	\$
76	866.6	SEWER MAIN POST-TELEVISION INSPECTION (8" - 15")	LF	5,381	\$	\$
77	900.4	PIPE BURSTING 10-INCH SDR-13.5 (ASTM D-3350) HDPE SANITARY SEWER LINE	LF	779	\$	\$
78	910.8	MANHOLE REHABILITATION (4' DIAMETER)	VF	72	\$	\$
79	1103	POINT REPAIRS	EA	2	\$	\$
<b>SUBTOTAL (ITEMS 1 - 79)</b>						

80	3001	CPS ENERGY ALLOWANCE FOR POLE BRACING	ALW	1	\$15,000	\$15,000
81	SC7	UNION PACIFIC RAILROAD FLAGGERS	ALW	1	\$77,100	\$77,100
82	100.1	MOBILIZATION AND DEMOBILIZATION, <b>MAX 10% OF LINE ITEMS 1 – 79</b>	LS	1	\$	\$
83	101.1	PREPARING ROW, <b>MAX 5% OF LINE ITEMS 1 - 79</b>	LS	1	\$	\$
<b>SUBTOTAL (ITEMS 80 - 83)</b>					\$	
<b>TOTAL BID PRICE (TO INCLUDE LINE ITEMS 1 - 83)</b>					\$	

Mobilization and Prep of ROW shall be limited to the maximum percentage shown. **If the percentage exceeds the allowable maximum stated for mobilization and or preparation of ROW, SAWS reserves the right to cap the amount at the percentages shown and adjust the extensions of the bid items accordingly.**

ESTIMATED QUANTITIES

PROJECT: 2019 SMALL CAPACITY CONSTRAINTS II  
Phase - 100% Design  
SAWS JOB NO. 19-4525

DATE: May 18, 2022  
JC PROJECT NO. 05772-0151-00

ITEM No.	DESCRIPTION	UNIT	QUANTITY
100.1	MOBILIZATION (MAX 10% OF ITEMS 3 TO 77)	LS	1
101.1	PREPARATION OF RIGHT-OF-WAY (MAX 5% OF ITEMS 3 TO 77)	LS	1
101.1	REMOVE SANITARY SEWER MANHOLE	EA	3
102.1	INTERMEDIATE DEMOBILIZATION AND REMOBILIZATION	EA	1
102.2	INTERMEDIATE DEMOBILIZATION BYPASS PUMPING EQUIPMENT RENTAL	DAY	3
102.3	INTERMEDIATE DEMOBILIZATION BYPASS PUMPING FUEL	DAY	3
102.4	INTERMEDIATE DEMOBILIZATION BYPASS PUMPING WATCH	DAY	3
103.1	REMOVE CONCRETE CURB (COSA SPEC)	LF	667
103.3	REMOVE CONCRETE SIDEWALK (COSA SPEC)	SY	55
103.3	REMOVE CONCRETE DRIVEWAY (COSA SPEC)	SY	344
104.1	STREET EXCAVATION (COSA SPEC)	CY	703
202.1	PRIME COAT (COSA SPEC)	GAL	130
203.1	TACK COAT (COSA SPEC)	GAL	186
205.4	HOT MIX ASPHALTIC CONCRETE PAVEMENT, TYPE D (2" COMPACTED DEPTH) (COSA SPEC)	SY	878
205.3	HOT MIX ASPHALTIC CONCRETE PAVEMENT, TYPE C (3" COMPACTED DEPTH) (COSA SPEC)	SY	986
206.1	ASPHALT TREATED BASE (ATB) (10" COMPACTED DEPTH) (COSA SPEC)	SY	878
206.1	ASPHALT TREATED BASE (ATB) (12" COMPACTED DEPTH) (COSA SPEC)	SY	986
208.1	SALVAGING HAULING & STOCKPILING RECLAIMABLE ASPHALTIC PAVEMENT (2" DEPTH) (COSA SPEC)	SY	878
208.1	SALVAGING HAULING & STOCKPILING RECLAIMABLE ASPHALTIC PAVEMENT (3" DEPTH) (COSA SPEC)	SY	986
209.2	CONCRETE BUS STOP PAD (COSA STANDARD DETAIL)	SY	548
299.7	FLOWABLE FILL	CY	296
405	PEDESTRIAN RAILING (TY PR11) (TXDOT SPEC)	LF	5
500.1	CONCRETE CURB (COSA SPEC)	LF	667
502.1	CONCRETE SIDEWALKS (COSA SPEC)	SY	55
503.1	PORTLAND CEMENT CONCRETE DRIVEWAYS (COSA SPEC)	SY	344
505.1	CONCRETE RIP-RAP (5-INCHES THICK) (COSA SPEC)	SY	1,260
SP507	REMOVE AND REPLACE FENCE	LF	1,377
509.1	METAL BEAM GUARD RAIL (COSA SPEC)	LF	588
515.1	TOPSOIL (COSA SPEC)	CY	132
516.1	BERMUDA SODDING (COSA SPEC)	SY	1,192
8000	TREE REMOVAL	EA	26
520.1	HYDROMULCHING (COSA SPEC)	SY	5,567
530.1	BARRICADES, SIGNS, AND TRAFFIC HANDLING - LOCATION 1 (COSA SPEC)	LS	1
530.1	BARRICADES, SIGNS, AND TRAFFIC HANDLING - LOCATION 2 (COSA SPEC)	LS	1
530.1	BARRICADES, SIGNS, AND TRAFFIC HANDLING - LOCATION 3 (COSA SPEC)	LS	1
535.1	4-INCH WIDE YELLOW LINE (W/REFLECTORS) (COSA SPEC)	LF	500
535.15	WHITE YIELD DIAMOND (COSA SPEC)	EA	5
535.2	4-INCH WIDE WHITE LINE (COSA SPEC)	LF	1,150
535.7	24-INCH WIDE WHITE LINE (COSA SPEC)	LF	40
540.1	TEMPORARY EROSION, SEDIMENTATION, AND WATER POLLUTION PREVENTION AND CONTROL	LS	1


ESTIMATED QUANTITIES

PROJECT: 2019 SMALL CAPACITY CONSTRAINTS II  
Phase - 100% Design  
SAWS JOB NO. 19-4525



DATE: May 18, 2022  
JC PROJECT NO. 05772-0151-00

ITEM No.	DESCRIPTION	UNIT	QUANTITY
550.1	TRENCH EXCAVATION SAFETY PROTECTION	LF	3,480
801	TREE PROTECTION	LS	1
848.6	8-INCH SDR-26 (ASTM D-3034) PVC SANITARY SEWER LINE (6'-10' DEPTH)	LF	42
848.6	10-INCH SDR-26 (ASTM D-3034) PVC SANITARY SEWER LINE (0'-6' DEPTH)	LF	1,101
848.6	10-INCH SDR-26 (ASTM D-3034) PVC SANITARY SEWER LINE (6'-10' DEPTH)	LF	1,311
848.6	10-INCH SDR-18 (AWWA C-900) PVC SANITARY SEWER LINE (6'-10' DEPTH)	LF	76
848.6	10-INCH SDR-26 (ASTM D-3034) PVC SANITARY SEWER LINE (>10' DEPTH)	LF	178
848.6	10-INCH SDR-13.5 (ASTM D-3350) HDPE SANITARY SEWER LINE (6'-10' DEPTH)	LF	111
848.6	12-INCH SDR-26 (ASTM D-3034) PVC SANITARY SEWER LINE (0'-6' DEPTH)	LF	175
848.6	12-INCH SDR-26 (ASTM D-3034) PVC SANITARY SEWER LINE (6'-10' DEPTH)	LF	41
848.6	12-INCH SDR-26 (ASTM D-3034) PVC SANITARY SEWER LINE (>10' DEPTH)	LF	30
848.6	15-INCH SDR-26 (ASTM D-3034) PVC SANITARY SEWER LINE (6'-10' DEPTH)	LF	388
848.6	21-INCH SDR-26 (ASTM D-3034) PVC SANITARY SEWER LINE (>10' DEPTH)	LF	7
851.4	EXISTING MANHOLE ADJUSTMENTS	EA	8
853.6	FIBER-REINFORCED SANITARY SEWER MANHOLE - (4' DIAMETER)	EA	24
853.6	FIBER-REINFORCED SANITARY SEWER MANHOLE - (4' DIAMETER) DOG HOUSE CONSTRUCTION	EA	1
854.7	SANITARY SEWER LATERALS, SDR-26 (ASTM D-2241, 150 PSI)	LF	588
854.7	TWO-WAY SANITARY SEWER CLEAN-OUT	EA	40
856.7	JACKING & BORING	LF	675
856.7	24-INCH STEEL CASING (0.375-INCH THICK)	LF	861
856.7	24-INCH STEEL CASING (0.438-INCH THICK)	LF	350
856.7	30-INCH STEEL CASING (0.375-INCH THICK)	LF	20
856.7	10-INCH PVC SDR-26 (ASTM D-3034) CARRIER PIPE FOR BORING OR JACKING	LF	675
856.7	15-INCH PVC SDR-26 (ASTM D-3034) CARRIER PIPE	LF	20
858.5	CONCRETE ENCASEMENT, CRADLES, SADDLES, AND COLLARS	CY	38
862.5	ABANDONMENT OF SANITARY SEWER MAINS	LF	2,579
862.5	ABANDONMENT OF SANITARY SEWER MANHOLES	EA	8
865	SMALL DIAMETER BYPASS PUMPING - LOCATION 1 (COMPKEY 963908)	LS	1
865	SMALL DIAMETER BYPASS PUMPING - LOCATION 2 (COMPKEYS 984636 & 973231)	LS	1
865	SMALL DIAMETER BYPASS PUMPING - LOCATION 3 (COMPKEY 983400)	LS	1
866.6	SEWER MAIN PRE-TELEVISION INSPECTION (8" - 15")	LF	4,826
866.6	SEWER MAIN POST-TELEVISION INSPECTION (8" - 15")	LF	4,934
900.4	PIPE BURSTING 10-INCH SDR-13.5 (ASTM D-3350) HDPE SANITARY SEWER LINE	LF	779
910.8	MANHOLE REHABILITATION (4' DIAMETER)	VF	72
1103	POINT REPAIRS	EA	2
3001	CPS ENERGY ALLOWANCE FOR POLE BRACING	ALW	1
SC7	UNION PACIFIC RAILROAD FLAGGERS	ALW	1

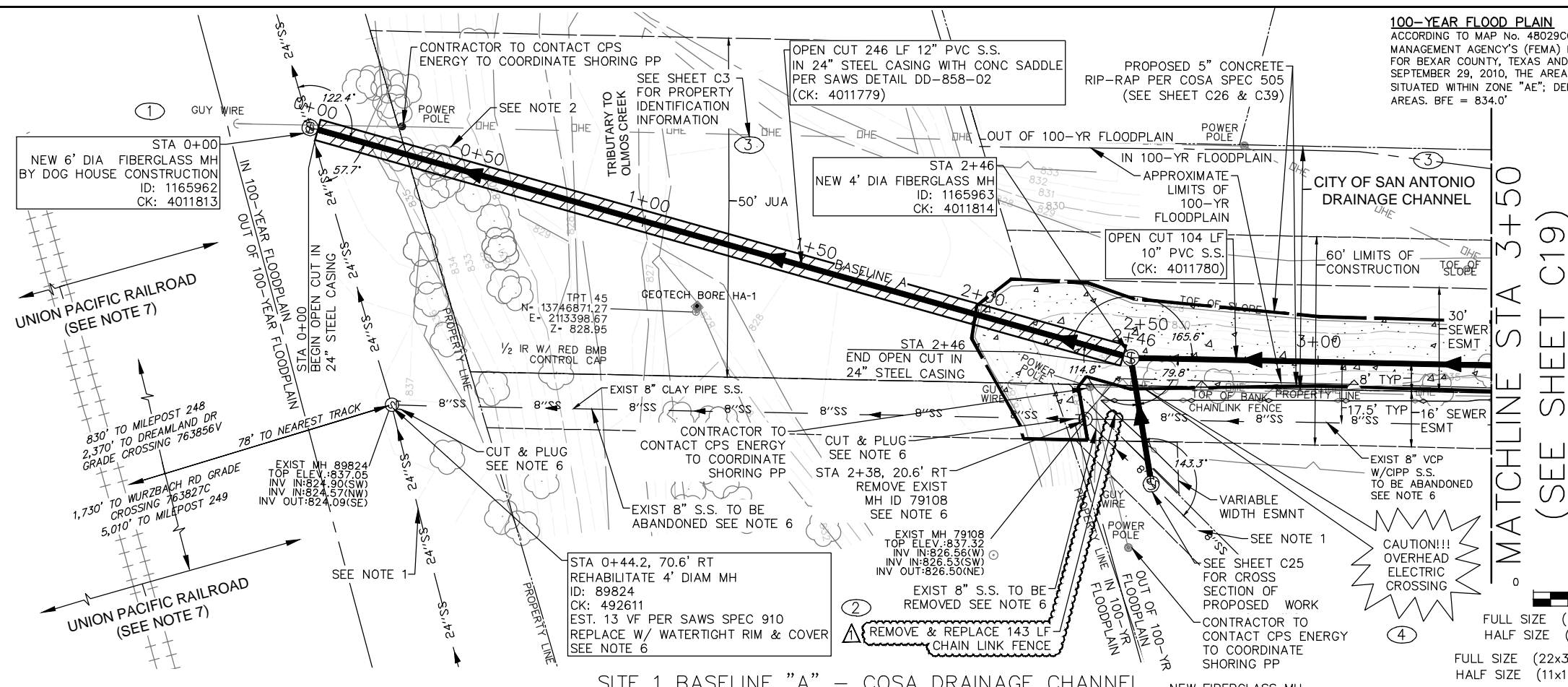
K:\05772\05772-0151-00\_2019 Small Capacity Constraints II Phase 100% Design Phase CAD\MSD202.dwg KHK May 18, 2022



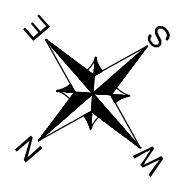
5/18/2022

1	5/18/22	ADDENDUM NO. 3					KHK
NO.	DATE	REVISIONS					APP.
 <p>TEXAS BOARD OF PROFESSIONAL ENGINEERS AND LAND SURVEYORS REGISTRATION NO. F-23290 4350 Lockhill Selma, Suite 100 San Antonio, Texas 78249 210.494.5511</p>							
SMALL CAPACITY CONSTRAINTS II SOLICITATION No. CO-00532							
PROJECT QUANTITIES							
DESIGN PHASE:		100%		 SAN ANTONIO WATER SYSTEM		SHEET ID: 4	
SAWS JOB No:		19-4525					
DATE:		3/31/2022		SHEET NO:		4	
DESIGN:		K KASPAR		OF TOTAL:		58	
DRAWN:		C CONSOLAC.		JC PROJECT No:		05772-0151-00	
CHECKED:		N ALFARO				G4	

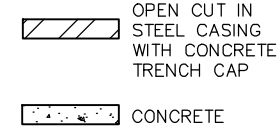
K:\05772\05772-0151-00 2019 Small Capacity Constraints II Proj\12 Design Phase\CAD\UTLS.dwg dwt: May 18, 2022



**100-YEAR FLOOD PLAIN**  
 ACCORDING TO MAP No. 48029C0245G OF THE FEDERAL EMERGENCY MANAGEMENT AGENCY'S (FEMA) FLOOD INSURANCE RATE MAP (FIRM) FOR BEXAR COUNTY, TEXAS AND INCORPORATED AREAS, DATED SEPTEMBER 29, 2010, THE AREA DETAILED ON THIS SHEET IS SITUATED WITHIN ZONE "AE"; DEFINED AS SPECIAL FLOOD HAZARD AREAS. BFE = 834.0'



**LEGEND:**

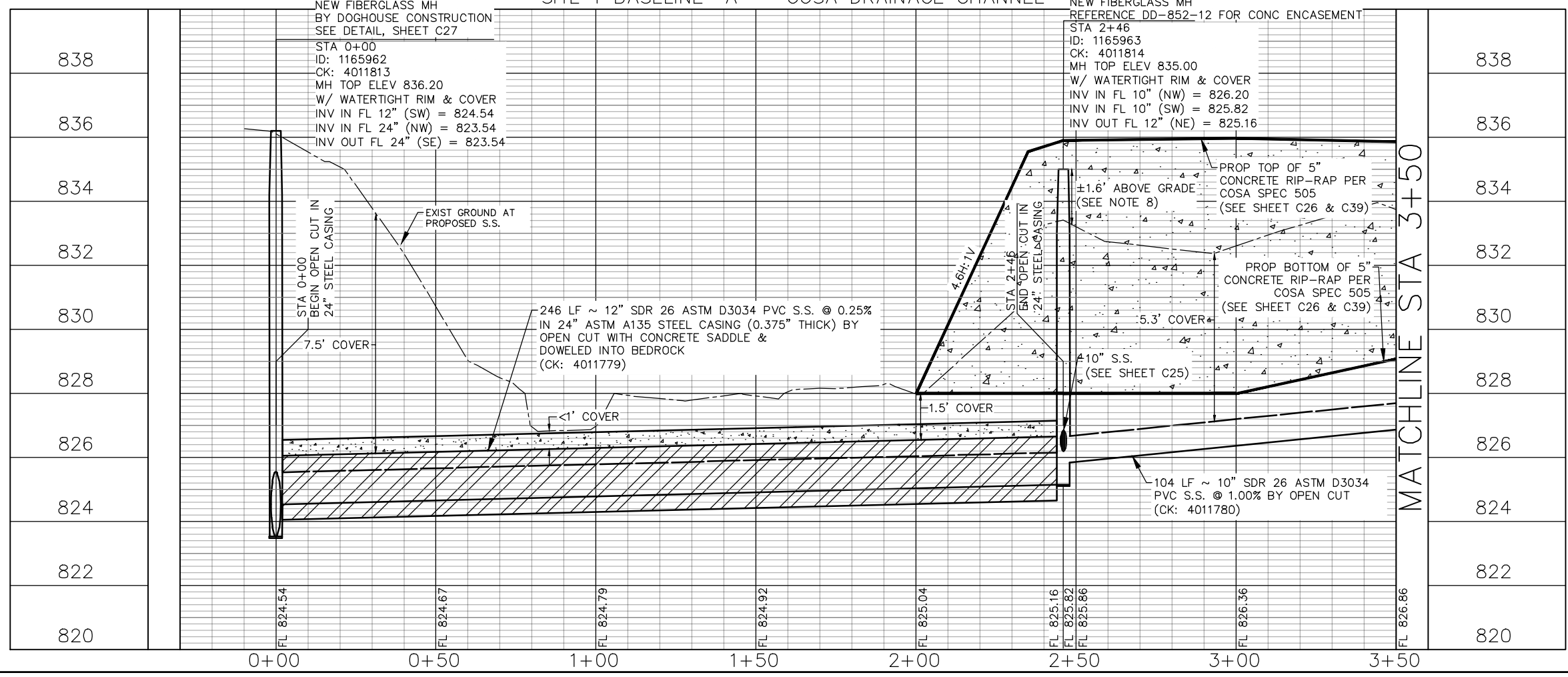


0 20 40  
 FULL SIZE (22x34) SCALE: 1" = 20'  
 HALF SIZE (11x17) SCALE: 1" = 40'  
 FULL SIZE (22x34) VERTICAL SCALE: 1" = 2'  
 HALF SIZE (11x17) VERTICAL SCALE: 1" = 4'

ESTIMATED QUANTITIES			
ITEM	DESCRIPTION	UNIT	QUANTITY
505.1	CONCRETE RIP-RAP (5-INCHES THICK) (COSA SPEC)	SY	425
SP507	REMOVE AND REPLACE FENCE	LF	143
520.1	HYDROMULCHING (COSA SPEC)	SY	1167
550.1	TRENCH EXCAVATION SAFETY PROTECTION	LF	350
848.6	10-INCH SDR-26 (ASTM D-3034) PVC SANITARY SEWER LINE (6'-10" DEPTH)	LF	104
848.6	12-INCH SDR-26 (ASTM D-3034) PVC SANITARY SEWER LINE (0'-6" DEPTH)	LF	175
848.6	12-INCH SDR-26 (ASTM D-3034) PVC SANITARY SEWER LINE (6'-10" DEPTH)	LF	41
848.6	12-INCH SDR-26 (ASTM D-3034) PVC SANITARY SEWER LINE (>10' DEPTH)	LF	30
851.4	EXISTING MANHOLE ADJUSTMENTS	EA	1
853.6	FIBER-REINFORCED SANITARY SEWER MANHOLE - (4' DIAMETER)	EA	1
853.6	FIBER-REINFORCED SANITARY SEWER MANHOLE - (6' DIAMETER) DOGHOUSE CONSTRUCTION	EA	1
856.6	24-INCH STEEL CASING (0.375-INCH THICK)	LF	246
858.5	CONCRETE ENCASUREMENT, CRADLES, SADDLES, AND COLLARS	CY	26.7
866.6	SEWER MAIN PRE-TELEVISION INSPECTION (8"-15")	LF	317
866.6	SEWER MAIN POST-TELEVISION INSPECTION (8"-15")	LF	350
910.8	MANHOLE REHABILITATION (4' DIAMETER)	VF	13
3001	CPS ENERGY ALLOWANCE FOR POLE BRACING	ALW	1

**NOTES:**

- REFERENCE SUGGESTED BYPASS PUMPING PLAN, SHEETS C15-C17.
- REFERENCE TREE PROTECTION PLAN, SHEETS TP4-TP7.
- REFERENCE PAVEMENT RESTORATION PLAN, SHEETS C36-C38.
- REFERENCE ACCESS STAGING PLAN, SHEETS C9-C11.
- EXIST SERVICE LATERALS SHOWN IN APPROXIMATE LOCATION. CONTRACTOR TO FIELD VERIFY. RECONNECT ALL EXISTING WASTEWATER SERVICE LATERALS TO PROPOSED REHABILITATED OR REPLACED WASTEWATER LINE. RELAY SERVICE LATERAL WITH NEW PIPE AND NEW CLEANOUT, AND VERTICAL STACKS PER SAWS STANDARD DETAIL DD-854-02.
- REFERENCE ABANDONMENT PLAN, SEE SHEET C12.
- UNION PACIFIC RAILROAD RIGHT-OF-WAY IS 50 FEET FROM THE CENTERLINE OF RAILROAD TRACK. CONTRACTOR TO MAINTAIN 50-FOOT OR MORE FROM THE RAIL TRACK AND COORDINATE WITH UNION PACIFIC RAILROAD AND COMPLY WITH ALL UNION PACIFIC RAILROAD RULES, REQUIREMENTS & REGULATIONS.
- CONTRACTOR TO PROVIDE MANHOLE RING ENCASUREMENT DETAIL (DD-852-02) WITH MODIFICATION TO EXTEND TOTAL HEIGHT OF CONCRETE FROM MANHOLE TOP ELEVATION TO MINIMUM 12-INCHES BELOW FINAL GRADE. (NSPI)



5/18/2022

NO.	DATE	ADDENDUM NO. 3	KHK
		REVISIONS	APP.

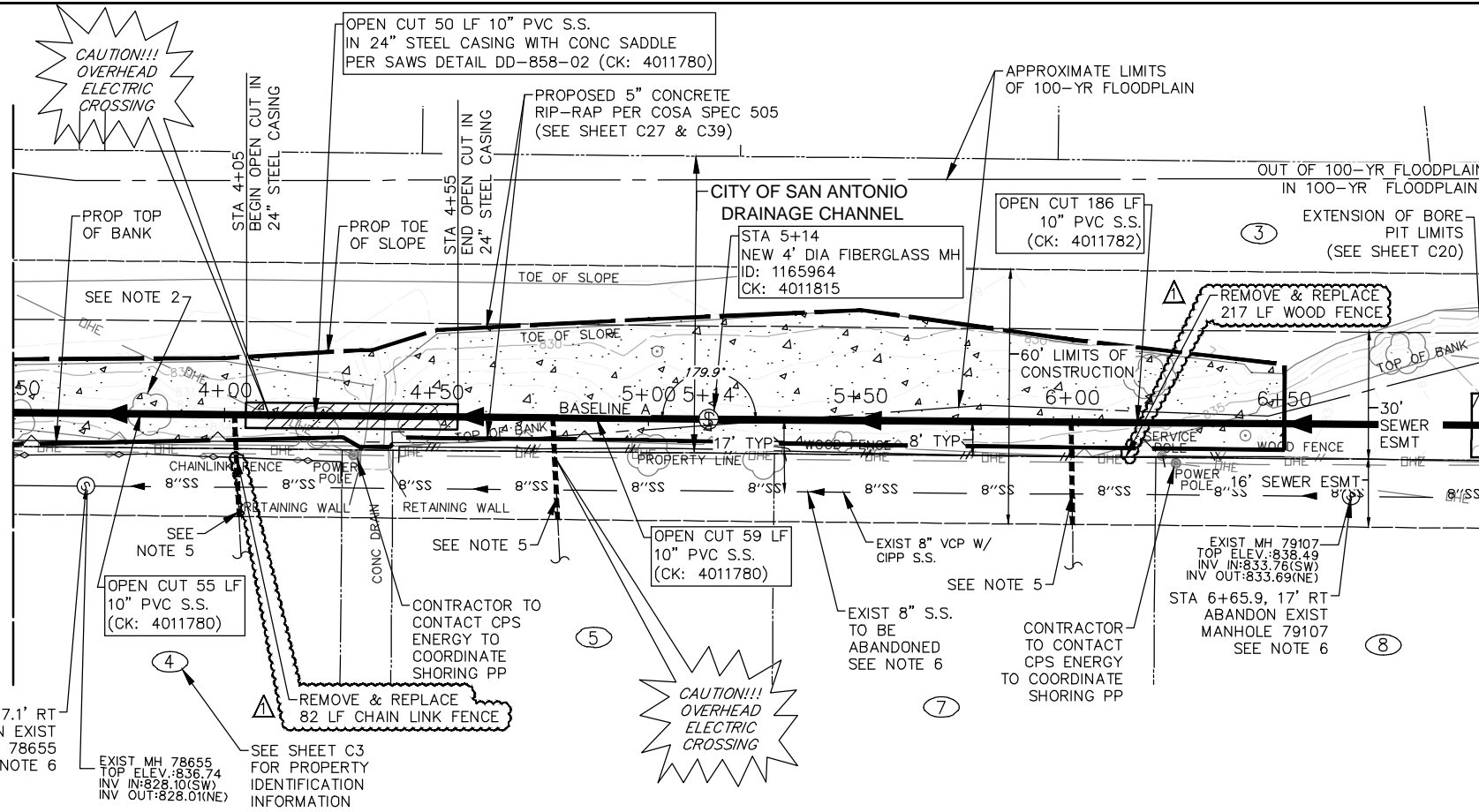
Small Capacity Constraints II  
SOLICITATION No. CO-00532

**SITE 1  
COSA DRAINAGE CHANNEL  
PLAN AND PROFILE  
BL A STA 0+00 TO STA 3+50**

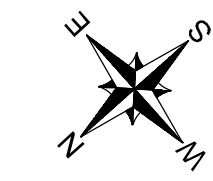
DESIGN PHASE: 100%	<p>SAN ANTONIO WATER SYSTEM</p>	SHEET NO: 22	SHEET ID: <b>C18</b>
SAWS JOB No: 19-4525		OF TOTAL: 58	
DATE: 3/31/2022	JC PROJECT No: 05772-0151-00		
DESIGN: K KASPAR			
DRAWN: C CONSOLAC.			
CHECKED: N ALFARO			

MATCHLINE STA 3+50  
(SEE SHEET C18)

MATCHLINE STA 7+00  
(SEE SHEET C20)



**100-YEAR FLOOD PLAIN**  
 ACCORDING TO MAP No. 48029C0245G OF THE FEDERAL EMERGENCY MANAGEMENT AGENCY'S (FEMA) FLOOD INSURANCE RATE MAP (FIRM) FOR BEXAR COUNTY, TEXAS AND INCORPORATED AREAS, DATED SEPTEMBER 29, 2010, THE AREA DETAILED ON THIS SHEET IS SITUATED WITHIN ZONE "AE"; DEFINED AS SPECIAL FLOOD HAZARD AREAS. BFE = 834.0'



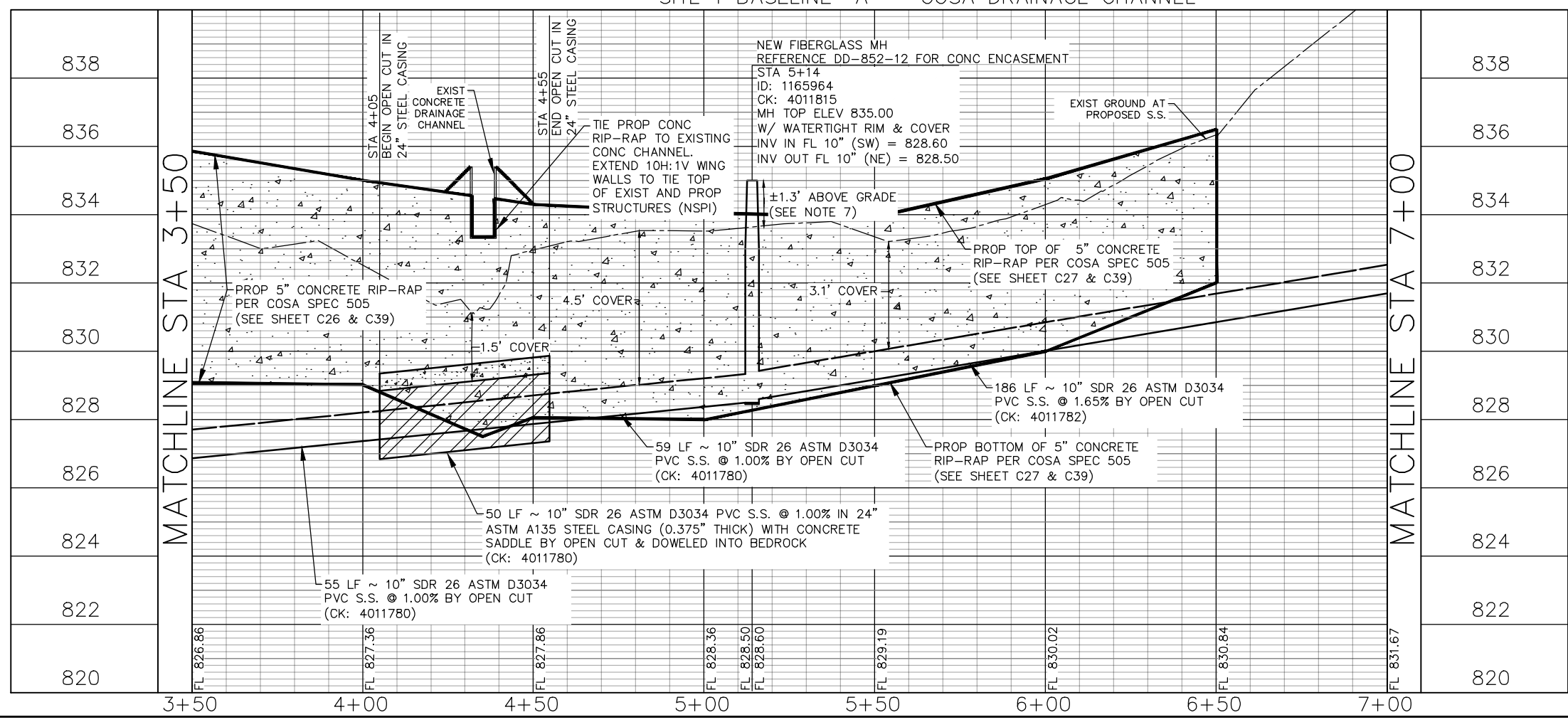
**LEGEND:**  
 OPEN CUT IN STEEL CASING WITH CONCRETE TRENCH CAP  
 CONCRETE

0 20 40  
 FULL SIZE (22x34) SCALE: 1" = 20'  
 HALF SIZE (11x17) SCALE: 1" = 40'  
 FULL SIZE (22x34) VERTICAL SCALE: 1" = 2'  
 HALF SIZE (11x17) VERTICAL SCALE: 1" = 4'

ESTIMATED QUANTITIES			
ITEM	DESCRIPTION	UNIT	QUANTITY
505.1	CONCRETE RIP-RAP (5-INCHES THICK) (COSA SPEC)	SY	835
SP507	REMOVE AND REPLACE FENCE	LF	299
520.1	HYDROMULCHING (COSA SPEC)	SY	1167
550.1	TRENCH EXCAVATION SAFETY PROTECTION	LF	350
848.6	10-INCH SDR-26 (ASTM D-3034) PVC SANITARY SEWER LINE (0'-6" DEPTH)	LF	285
848.6	10-INCH SDR-26 (ASTM D-3034) PVC SANITARY SEWER LINE (6'-10' DEPTH)	LF	65
853.6	FIBER-REINFORCED SANITARY SEWER MANHOLE - (4' DIAMETER)	EA	1
854.7	SANITARY SEWER LATERALS, SDR-26 (ASTM D-2241, 150 PSI)	LF	72
854.7	TWO-WAY SANITARY SEWER CLEAN-OUT	EA	3
856.6	24-INCH STEEL CASING (0.375-INCH THICK)	LF	50
858.5	CONCRETE ENCASEMENT, CRADLES, SADDLES, AND COLLARS	CY	5.4
866.6	SEWER MAIN PRE-TELEVISION INSPECTION (8'-15')	LF	350
866.6	SEWER MAIN POST-TELEVISION INSPECTION (8'-15')	LF	350
3001	CPS ENERGY ALLOWANCE FOR POLE BRACING	ALW	1

- NOTES:**
- REFERENCE SUGGESTED BYPASS PUMPING PLAN, SHEETS C15-C17.
  - REFERENCE TREE PROTECTION PLAN, SHEETS TP4-TP7.
  - REFERENCE PAVEMENT RESTORATION PLAN, SHEETS C36-C38.
  - REFERENCE ACCESS STAGING PLAN, SHEETS C9-C11.
  - EXIST SERVICE LATERALS SHOWN IN APPROXIMATE LOCATION. CONTRACTOR TO FIELD VERIFY. RECONNECT ALL EXISTING WASTEWATER SERVICE LATERALS TO PROPOSED REHABILITATED OR REPLACED WASTEWATER LINE. RELAY SERVICE LATERAL WITH NEW PIPE, NEW CLEANOUT, AND VERTICAL STACKS PER SAWS STANDARD DETAIL DD-854-02. REMOVE & REPLACE FENCES AS NECESSARY FOR RECONSTRUCTION OF SERVICE LATERALS. MATCH EXISTING FENCE SIZE AND TYPE.
  - REFERENCE ABANDONMENT PLAN, SEE SHEET C12.
  - CONTRACTOR TO PROVIDE MANHOLE RING ENCASEMENT DETAIL (DD-852-02) WITH MODIFICATION TO EXTEND TOTAL HEIGHT OF CONCRETE FROM MANHOLE TOP ELEVATION TO MINIMUM 12-INCHES BELOW FINAL GRADE. (NSPI)

SITE 1 BASELINE "A" - COSA DRAINAGE CHANNEL



5/18/2022

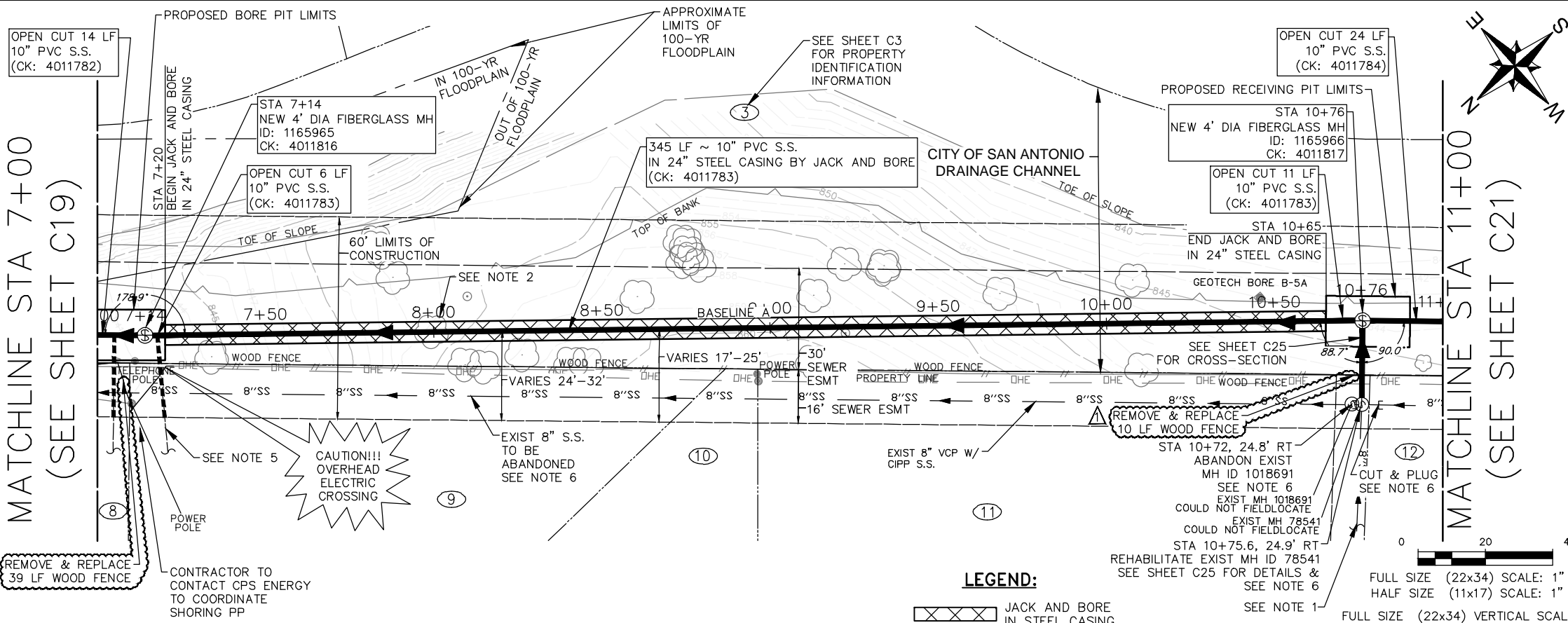
1	5/18/22	ADDENDUM NO. 3	KHK
NO.	DATE	REVISIONS	APP.

SMALL CAPACITY CONSTRAINTS II  
SOLICITATION No. CO-00532

**SITE 1  
COSA DRAINAGE CHANNEL  
PLAN AND PROFILE  
BL A STA 3+50 TO STA 7+00**

DESIGN PHASE: 100%	<p>SAN ANTONIO WATER SYSTEM</p>	SHEET NO: 23
SAWS JOB No: 19-4525		OF TOTAL: 58
DATE: 3/31/2022	JC PROJECT No:	<b>C19</b>
DESIGN: K KASPAR	05772-0151-00	
DRAWN: C CONSOLAC.	CHECKED: N ALFARO	

K:\05772\05772-0151-00\_2019\_Small Capacity Constraints II Profile CAD\UTLS.dwg    dwt: May 18, 2022

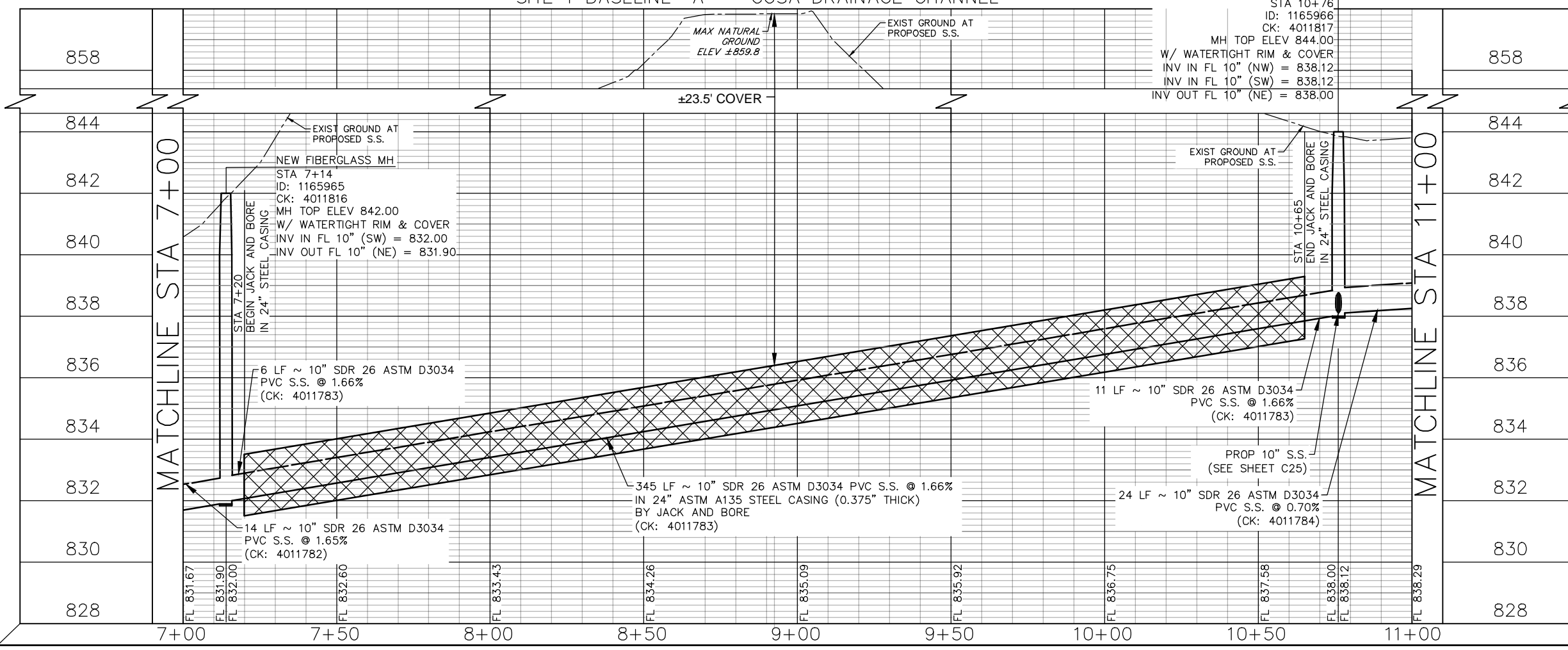


**100-YEAR FLOOD PLAIN**  
 ACCORDING TO MAP No. 48029C0245G OF THE FEDERAL EMERGENCY MANAGEMENT AGENCY'S (FEMA) FLOOD INSURANCE RATE MAP (FIRM) FOR BEXAR COUNTY, TEXAS AND INCORPORATED AREAS, DATED SEPTEMBER 29, 2010, THE AREA DETAILED ON THIS SHEET IS SITUATED WITHIN ZONE "AE"; REFERRED AS SPECIAL FLOOD HAZARD AREAS. BFE = 834.0'

ESTIMATED QUANTITIES			
ITEM	DESCRIPTION	UNIT	QUANTITY
SP507	REMOVE AND REPLACE FENCE	LF	49
520.1	HYDROMULCHING (COSA SPEC)	SY	183
550.1	TRENCH EXCAVATION SAFETY PROTECTION	LF	55
848.6	10-INCH SDR-26 (ASTM D-3034) PVC SANITARY SEWER LINE (0'-6" DEPTH)	LF	24
848.6	10-INCH SDR-26 (ASTM D-3034) PVC SANITARY SEWER LINE (6'-10" DEPTH)	LF	25
848.6	10-INCH SDR-26 (ASTM D-3034) PVC SANITARY SEWER LINE (>10' DEPTH)	LF	6
853.6	FIBER-REINFORCED SANITARY SEWER MANHOLE - (4' DIAMETER)	EA	2
854.7	SANITARY SEWER LATERALS, SDR-26 (ASTM D-2241, 150 PS)	LF	49
854.7	TWO-WAY SANITARY SEWER CLEAN-OUT	EA	2
856.6	JACKING & BORING	LF	345
856.6	24-INCH STEEL CASING (0.375-INCH THICK)	LF	345
856.6	10-INCH PVC SDR-26 (ASTM D-3034) CARRIER PIPE FOR BORING OR JACKING	LF	345
866.6	SEWER MAIN PRE-TELEVISION INSPECTION (8"-15")	LF	400
866.6	SEWER MAIN POST-TELEVISION INSPECTION (8"-15")	LF	400
3001	CPS ENERGY ALLOWANCE FOR POLE BRACING	ALW	1

- NOTES:**
- REFERENCE SUGGESTED BYPASS PUMPING PLAN, SHEETS C15-C17.
  - REFERENCE TREE PROTECTION PLAN, SHEETS TP4-TP7.
  - REFERENCE PAVEMENT RESTORATION PLAN, SHEETS C36-C38.
  - REFERENCE ACCESS STAGING PLAN, SHEETS C9-C11.
  - EXIST SERVICE LATERALS SHOWN IN APPROXIMATE LOCATION. CONTRACTOR TO FIELD VERIFY. RECONNECT ALL EXISTING WASTEWATER SERVICE LATERALS TO PROPOSED REHABILITATED OR REPLACED WASTEWATER LINE. RELAY SERVICE LATERAL WITH NEW PIPE, NEW CLEANOUT, AND VERTICAL STACKS PER SAWS STANDARD DETAIL DD-854-02. REMOVE & REPLACE FENCES AS NECESSARY FOR RECONSTRUCTION OF SERVICE LATERALS. MATCH EXISTING FENCE SIZE AND TYPE.
  - REFERENCE ABANDONMENT PLAN, SEE SHEET C12.

**SITE 1 BASELINE "A" - COSA DRAINAGE CHANNEL**



5/18/2022

1	5/18/22	ADDENDUM NO. 3	KHK
NO.	DATE	REVISIONS	APP.

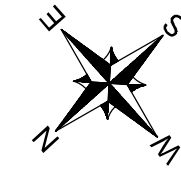
SMALL CAPACITY CONSTRAINTS II  
SOLICITATION No. CO-00532

**SITE 1  
COSA DRAINAGE CHANNEL  
PLAN AND PROFILE  
BL A STA 7+00 TO STA 11+00**

DESIGN PHASE: 100%	<p>SAN ANTONIO WATER SYSTEM</p>	SHEET NO: 24
SAWS JOB No: 19-4525		OF TOTAL: 58
DATE: 3/31/2022	JC PROJECT No:	SHEET ID:
DESIGN: K KASPAR	05772-0151-00	<b>C20</b>
DRAWN: C CONSOLAC.	CHECKED: N ALFARO	

K:\05772\05772-0151-00 2019 Small Capacity Constraints II Profile Design Phase\CAD\UTLS.dwg    dwt: May 18, 2022

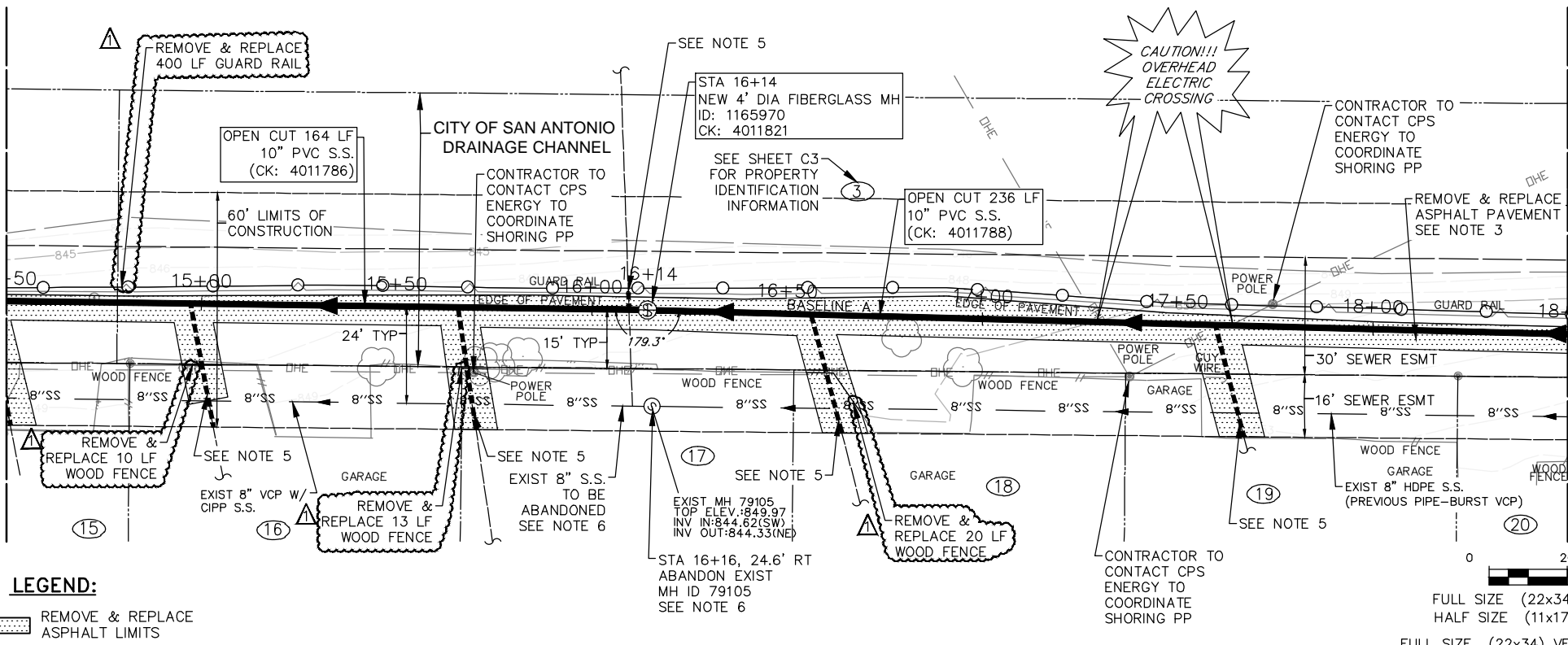




**100-YEAR FLOOD PLAIN**  
 ACCORDING TO MAP No. 48029C0245G OF THE FEDERAL EMERGENCY MANAGEMENT AGENCY'S (FEMA) FLOOD INSURANCE RATE MAP (FIRM) FOR BEXAR COUNTY, TEXAS AND INCORPORATED AREAS, DATED SEPTEMBER 29, 2010, THE AREA DETAILED ON THIS SHEET IS SITUATED WITHIN ZONE "X"; DEFINED AS AREAS OF MINIMAL FLOOD HAZARD. NO BASE FLOOD ELEVATION (BFE) IS DEFINED.

MATCHLINE STA 14+50  
(SEE SHEET C21)

MATCHLINE STA 18+50  
(SEE SHEET C23)

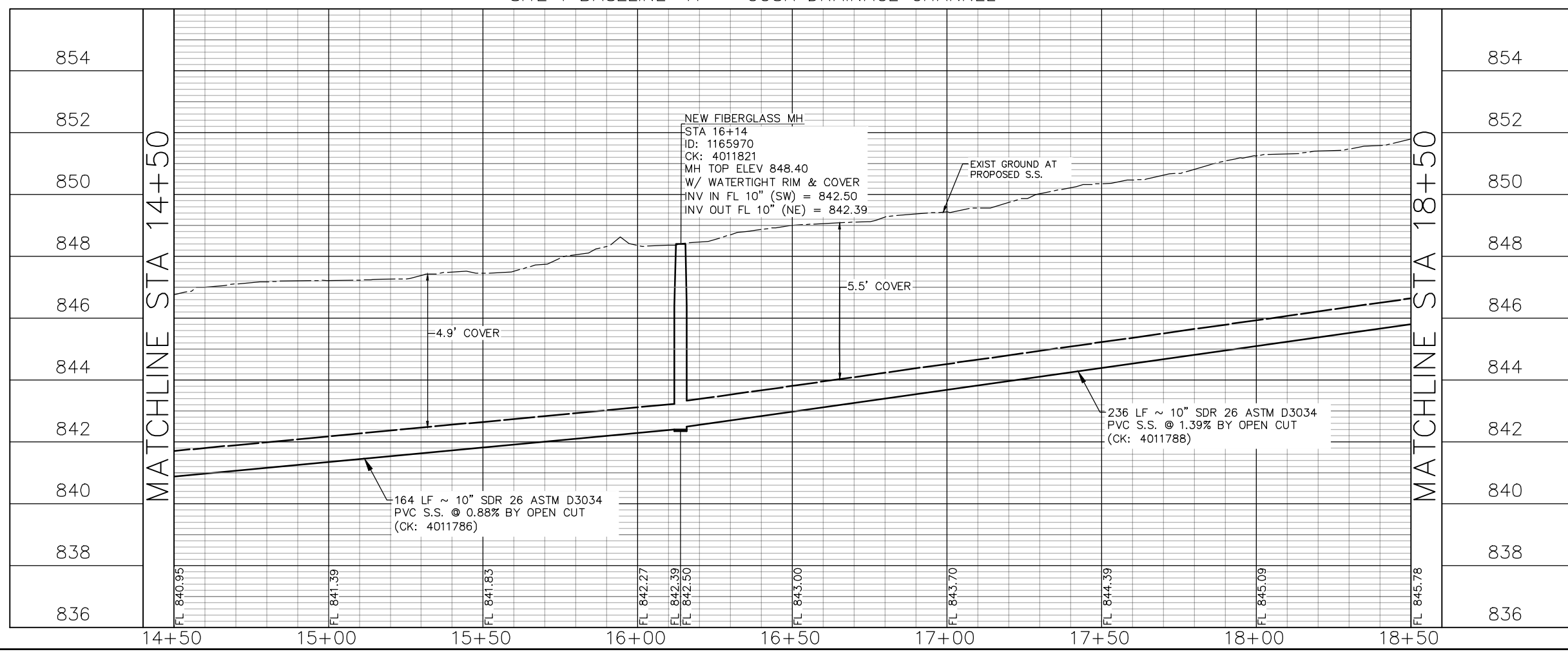


SITE 1 BASELINE "A" - COSA DRAINAGE CHANNEL

ESTIMATED QUANTITIES			
ITEM	DESCRIPTION	UNIT	QUANTITY
509.1	METAL BEAM GUARD RAIL (COSA SPEC)	LF	400
SP507	REMOVE AND REPLACE FENCE	LF	43
520.1	HYDROMULCHING (COSA SPEC)	SY	1333
550.1	TRENCH EXCAVATION SAFETY PROTECTION	LF	400
848.6	10-INCH SDR-26 (ASTM D-3034) PVC SANITARY SEWER LINE (0'-8' DEPTH)	LF	400
853.6	FIBER-REINFORCED SANITARY SEWER MANHOLE - (4' DIAMETER)	EA	1
854.7	SANITARY SEWER LATERALS, SDR-26 (ASTM D-2241, 150 PSI)	LF	125
854.7	TWO-WAY SANITARY SEWER CLEAN-OUT	EA	4
866.6	SEWER MAIN PRE-TELEVISION INSPECTION (8"-15")	LF	400
866.6	SEWER MAIN POST-TELEVISION INSPECTION (8"-15")	LF	400
3001	CPS ENERGY ALLOWANCE FOR POLE BRACING	ALW	1

- NOTES:**
- REFERENCE SUGGESTED BYPASS PUMPING PLAN, SHEETS C15-C17.
  - REFERENCE TREE PROTECTION PLAN, SHEETS TP4-TP7.
  - REFERENCE PAVEMENT RESTORATION PLAN, SHEETS C36-C38.
  - REFERENCE ACCESS STAGING PLAN, SHEETS C9-C11.
  - EXIST SERVICE LATERALS SHOWN IN APPROXIMATE LOCATION. CONTRACTOR TO FIELD VERIFY. RECONNECT ALL EXISTING WASTEWATER SERVICE LATERALS TO PROPOSED REHABILITATED OR REPLACED WASTEWATER LINE. RELAY SERVICE LATERAL WITH NEW PIPE, NEW CLEANOUT, AND VERTICAL STACKS PER SAWS STANDARD DETAIL DD-854-02. REMOVE & REPLACE FENCES AS NECESSARY FOR RECONSTRUCTION OF SERVICE LATERALS. MATCH EXISTING FENCE SIZE AND TYPE.
  - REFERENCE ABANDONMENT PLAN, SEE SHEET C12.

0 20 40  
 FULL SIZE (22x34) SCALE: 1" = 20'  
 HALF SIZE (11x17) SCALE: 1" = 40'  
 FULL SIZE (22x34) VERTICAL SCALE: 1" = 2'  
 HALF SIZE (11x17) VERTICAL SCALE: 1" = 4'



5/18/2022

1	5/18/22	ADDENDUM NO. 3	KHK
NO.	DATE	REVISIONS	APP.

**JONES CARTER**  
Texas Board of Professional Engineers and Land Surveyors Registration No. F-23290  
 4350 Lockhill Selma, Suite 100 San Antonio, Texas 78249 210.494.5511

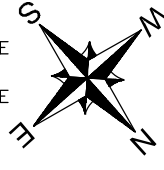
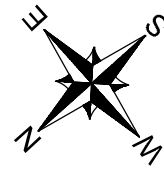
**SMALL CAPACITY CONSTRAINTS II  
 SOLICITATION No. CO-00532**

**SITE 1  
 COSA DRAINAGE CHANNEL  
 PLAN AND PROFILE  
 BL A STA 14+50 TO STA 18+50**

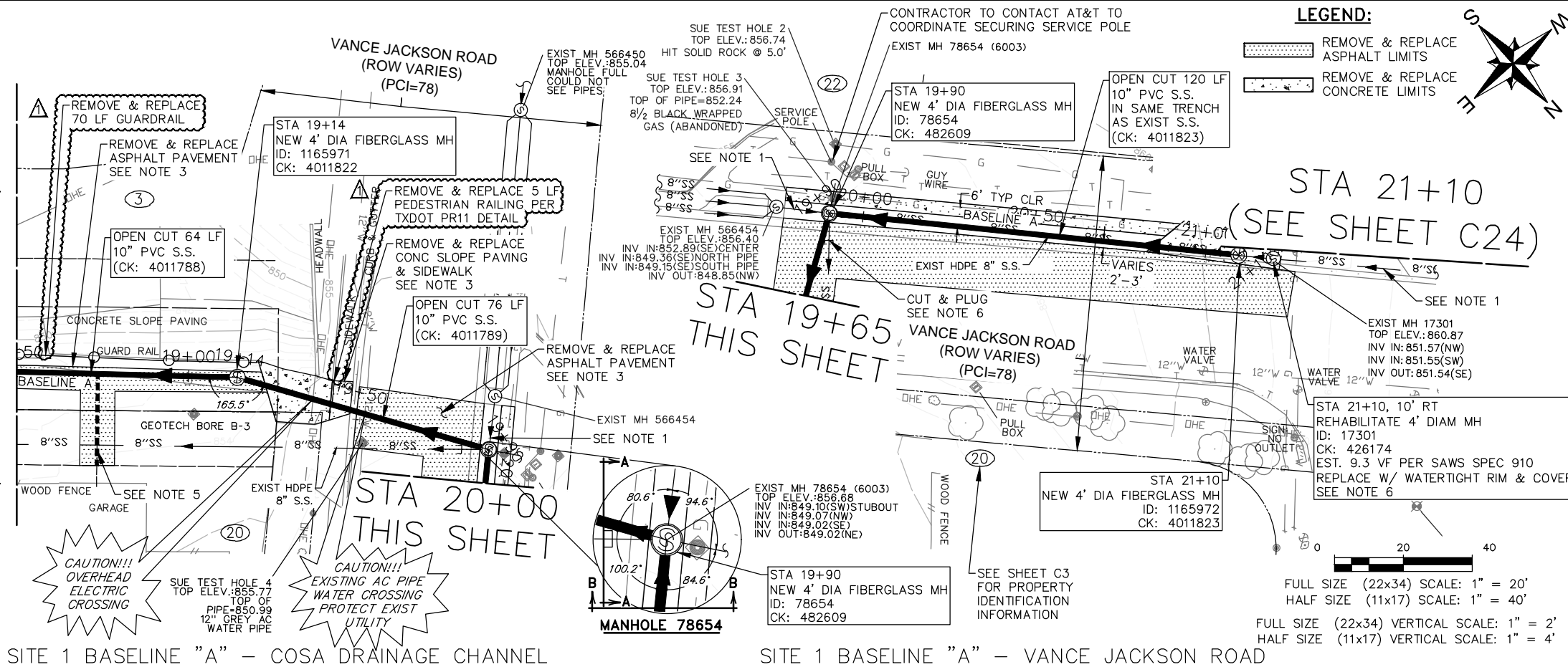
DESIGN PHASE: 100%		SHEET NO: 26	SHEET ID: <b>C22</b>
SAWS JOB No: 19-4525		OF TOTAL: 58	
DATE: 3/31/2022	SAN ANTONIO WATER SYSTEM	JC PROJECT No: 05772-0151-00	
DESIGN: K KASPAR			
DRAWN: C CONSOLAC.			
CHECKED: N ALFARO			

K:\05772\05772-0151-00\_2019\_Small Capacity Constraints II Profile Design Phase\CAD\UTLS.dwg dwt: May 18, 2022





MATCHLINE STA 18+50  
(SEE SHEET C22)



**LEGEND:**

- REMOVE & REPLACE ASPHALT LIMITS
- REMOVE & REPLACE CONCRETE LIMITS

**100-YEAR FLOOD PLAIN**  
 ACCORDING TO MAP No. 48029C0245G OF THE FEDERAL EMERGENCY MANAGEMENT AGENCY'S (FEMA) FLOOD INSURANCE RATE MAP (FIRM) FOR BEXAR COUNTY, TEXAS AND INCORPORATED AREAS, DATED SEPTEMBER 29, 2010, THE AREA DETAILED ON THIS SHEET IS SITUATED WITHIN ZONE "X", DEFINED AS AREAS OF MINIMAL FLOOD HAZARD. NO BASE FLOOD ELEVATION (BFE) IS DEFINED.

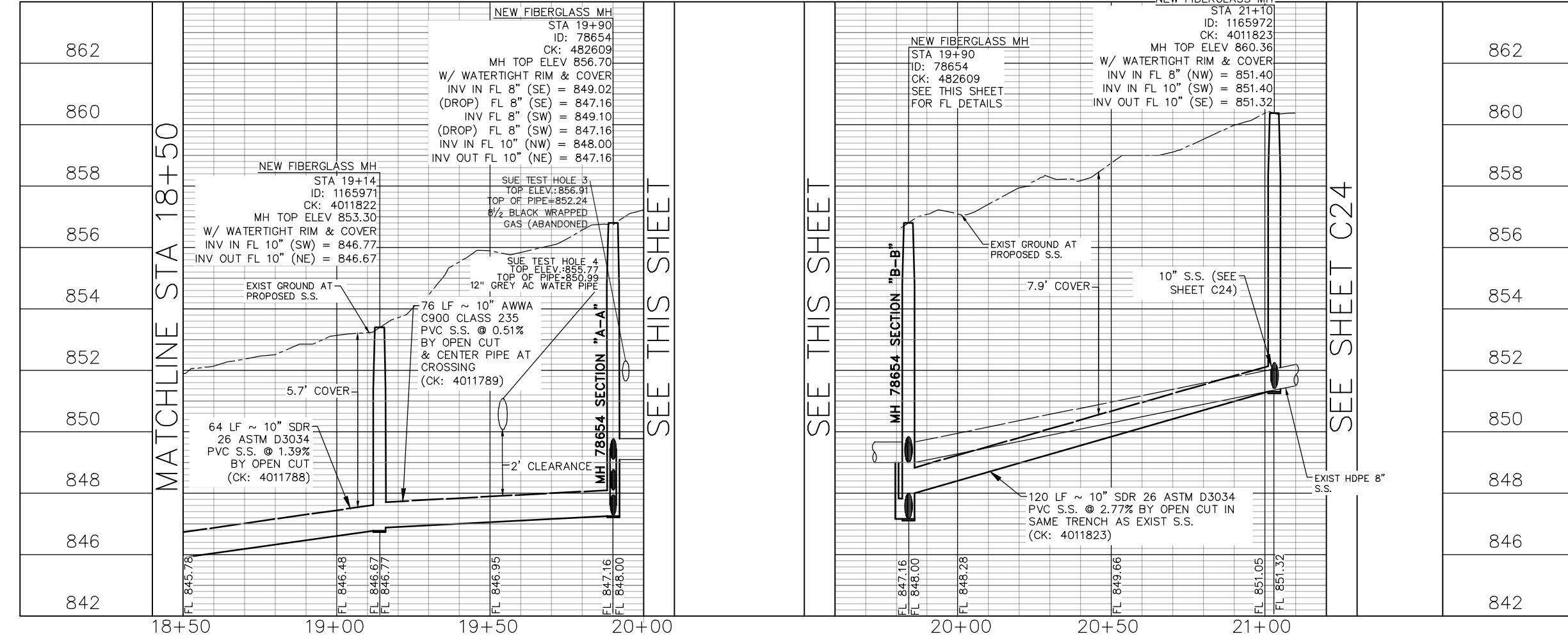
ESTIMATED QUANTITIES			
ITEM	DESCRIPTION	UNIT	QUANTITY
405	PEDESTRIAN RAILING (TY PR11) (TXDOT SPEC)	LF	5
509.1	METAL BEAM GUARD RAIL (COSA SPEC)	LF	70
520.1	HYDROMULCHING (COSA SPEC)	SY	550
550.1	TRENCH EXCAVATION SAFETY PROTECTION	LF	260
848.6	10-INCH SDR-26 (ASTM D-3034) PVC SANITARY SEWER LINE (6'-10" DEPTH)	LF	184
848.6	10-INCH SDR-18 (AWWA C-900) PVC SANITARY SEWER LINE (6'-10" DEPTH)	LF	76
851.4	EXISTING MANHOLE ADJUSTMENTS	EA	1
853.6	FIBER-REINFORCED SANITARY SEWER MANHOLE - (4' DIAMETER)	EA	3
854.7	SANITARY SEWER LATERALS, SDR-26 (ASTM D-2241, 150 PS)	LF	27
854.7	TWO-WAY SANITARY SEWER CLEAN-OUT	EA	1
866.6	SEWER MAIN PRE-TELEVISION INSPECTION (8'-15")	LF	257
866.6	SEWER MAIN POST-TELEVISION INSPECTION (8'-15")	LF	260
910.8	MANHOLE REHABILITATION	VF	9
SC5	CPS ENERGY ALLOWANCE FOR POLE BRACING	ALW	1

**NOTES:**

- REFERENCE SUGGESTED BYPASS PUMPING PLAN, SHEETS C15-C17.
- REFERENCE TREE PROTECTION PLAN, SHEETS TP4-TP7.
- REFERENCE PAVEMENT RESTORATION PLAN, SHEETS C36-C38.
- REFERENCE ACCESS STAGING PLAN, SHEETS C9-C11.
- EXIST SERVICE LATERALS SHOWN IN APPROXIMATE LOCATION. CONTRACTOR TO FIELD VERIFY. RECONNECT ALL EXISTING WASTEWATER SERVICE LATERALS TO PROPOSED REHABILITATED OR REPLACED WASTEWATER LINE. RELAY SERVICE LATERAL WITH NEW PIPE, NEW CLEANOUT, AND VERTICAL STACKS PER SAWS STANDARD DETAIL DD-854-02. REMOVE & REPLACE FENCES AS NECESSARY FOR RECONSTRUCTION OF SERVICE LATERALS. MATCH EXISTING FENCE SIZE AND TYPE.
- REFERENCE ABANDONMENT PLAN, SEE SHEET C12.
- CONTRACTOR TO COORDINATE WITH OAK CREEK APARTMENT COMPLEX TO MAINTAIN ACCESS TO PROPERTY AND PRIMARY BUSINESS OFFICE AT ALL TIMES.

SITE 1 BASELINE "A" - COSA DRAINAGE CHANNEL

SITE 1 BASELINE "A" - VANCE JACKSON ROAD



5/18/2022

1	5/18/22	ADDENDUM NO. 3	KHK
NO.	DATE	REVISIONS	APP.

**JONES CARTER**  
 Texas Board of Professional Engineers and Land Surveyors Registration No. F-23290  
 4350 Lockhill Selma, Suite 100 San Antonio, Texas 78249 210.494.5511

SMALL CAPACITY CONSTRAINTS II  
 SOLICITATION No. CO-00532

**SITE 1  
 VANCE JACKSON ROAD  
 PLAN AND PROFILE  
 BL A STA 18+50 TO STA 21+10**

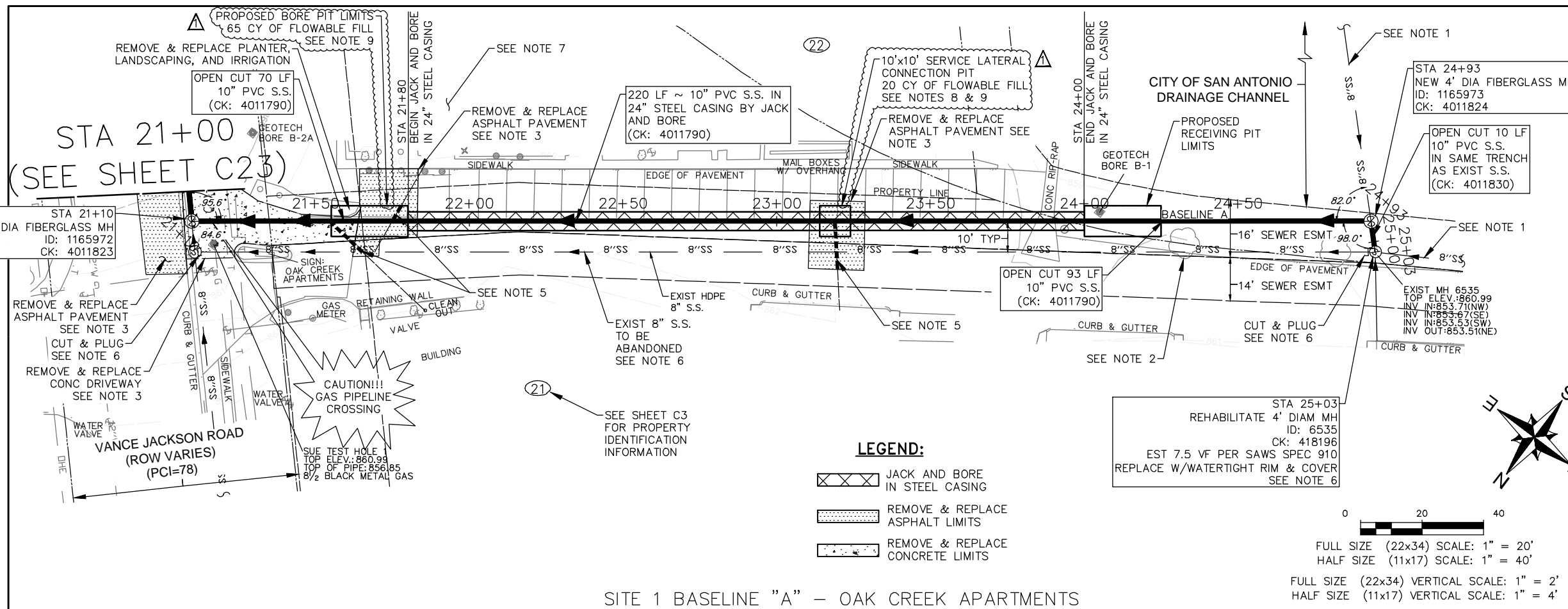
DESIGN PHASE: 100%  
 SAWS JOB No: 19-4525

DATE: 3/31/2022 SHEET NO: 27 OF TOTAL: 58  
 DESIGN: K KASPAR  
 DRAWN: C CONSOLAC.  
 CHECKED: N ALFARO

SAN ANTONIO WATER SYSTEM

JC PROJECT No: 05772-0151-00  
 SHEET ID: **C23**

K:\05772\05772-0151-00 2019 Small Capacity Constraints II Prop\12 Design Phase\CAD\UTLS.dwg dwt: May 18, 2022



SITE 1 BASELINE "A" - OAK CREEK APARTMENTS

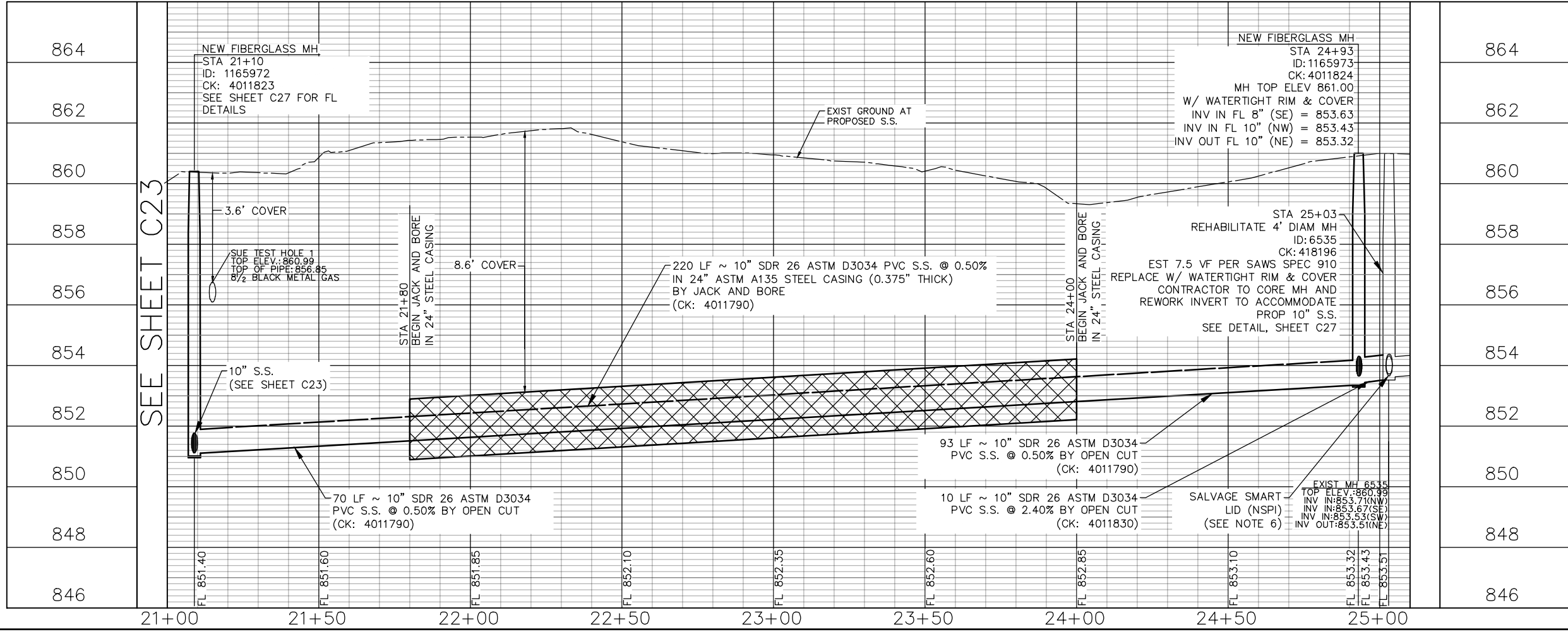
**100-YEAR FLOOD PLAIN**  
 ACCORDING TO MAP No. 48029C0245G OF THE FEDERAL EMERGENCY MANAGEMENT AGENCY'S (FEMA) FLOOD INSURANCE RATE MAP (FIRM) FOR BEXAR COUNTY, TEXAS AND INCORPORATED AREAS, DATED SEPTEMBER 29, 2010, THE AREA DETAILED ON THIS SHEET IS SITUATED WITHIN ZONE "X"; DEFINED AS AREAS OF MINIMAL FLOOD HAZARD. NO BASE FLOOD ELEVATION (BFE) IS DEFINED.

ESTIMATED QUANTITIES			
ITEM	DESCRIPTION	UNIT	QUANTITY
299.7	FLOWABLE FILL	CY	85
550.1	TRENCH EXCAVATION SAFETY PROTECTION	LF	173
848.6	10-INCH SDR-26 (ASTM D-3034) PVC SANITARY SEWER LINE (6'-10' DEPTH)	LF	173
851.4	EXISTING MANHOLE ADJUSTMENTS	EA	1
853.6	FIBER-REINFORCED SANITARY SEWER MANHOLE - (4' DIAMETER)	EA	1
854.7	SANITARY SEWER LATERALS, SDR-26 (ASTM D-2241, 150 PSI)	LF	36
854.7	TWO-WAY SANITARY SEWER CLEAN-OUT	EA	3
856.6	JACKING & BORING	LF	220
856.6	24-INCH STEEL CASING (0.375-INCH THICK)	LF	220
856.6	10-INCH PVC SDR-26 (ASTM D-3034) CARRIER PIPE FOR BORING OR JACKING	LF	220
866.6	SEWER MAIN PRE-TELEVISION INSPECTION (8"-15")	LF	394
866.6	SEWER MAIN POST-TELEVISION INSPECTION (8"-15")	LF	393
910.8	MANHOLE REHABILITATION - (4' DIAMETER)	VF	7.5

- NOTES:**
- REFERENCE SUGGESTED BYPASS PUMPING PLAN, SHEETS C15-C17.
  - REFERENCE TREE PROTECTION PLAN, SHEETS TP4-TP7.
  - REFERENCE PAVEMENT RESTORATION PLAN, SHEETS C36-C38.
  - REFERENCE ACCESS STAGING PLAN, SHEETS C9-C11.
  - EXIST SERVICE LATERALS SHOWN IN APPROXIMATE LOCATION. CONTRACTOR TO FIELD VERIFY. RECONNECT ALL EXISTING WASTEWATER SERVICE LATERALS TO PROPOSED REHABILITATED OR REPLACED WASTEWATER LINE. RELAY SERVICE LATERAL WITH NEW PIPE, NEW CLEANOUT, AND VERTICAL STACKS PER SAWS STANDARD DETAIL DD-854-02. REMOVE & REPLACE FENCES AS NECESSARY FOR RECONSTRUCTION OF SERVICE LATERALS. MATCH EXISTING FENCE SIZE AND TYPE.
  - REFERENCE ABANDONMENT PLAN, SEE SHEET C12.
  - CONTRACTOR TO COORDINATE WITH OAK CREEK APARTMENT COMPLEX TO MAINTAIN ACCESS TO PROPERTY AND PRIMARY BUSINESS OFFICE AT ALL TIMES.
  - CONTRACTOR TO CUT STEEL CASING 5'-10' AS NECESSARY TO EXTEND AND RECONNECT SERVICE LATERAL. (NSPI)
  - CONTRACTOR TO UTILIZE FLOWABLE FILL BACKFILL FOR THE DESIGNATED BORE PITS.

**LEGEND:**

- JACK AND BORE IN STEEL CASING
- REMOVE & REPLACE ASPHALT LIMITS
- REMOVE & REPLACE CONCRETE LIMITS



5/18/2022

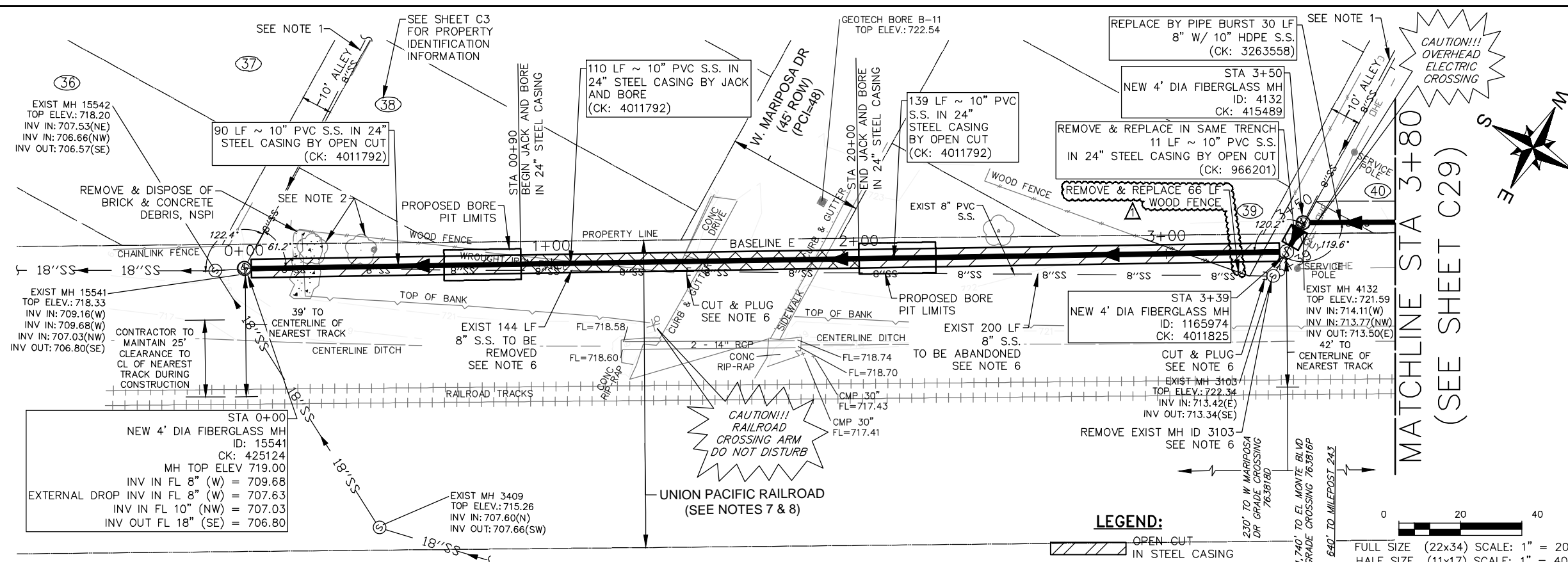
1	5/18/22	ADDENDUM NO. 3	KHK
NO.	DATE	REVISIONS	APP.

SMALL CAPACITY CONSTRAINTS II SOLICITATION No. CO-00532

**SITE 1 OAK CREEK APARTMENTS PLAN AND PROFILE BL A STA 21+10 TO STA 25+03**

DESIGN PHASE: 100%	
SAWS JOB No: 19-4525	
DATE: 3/31/2022	SHEET NO: 28
DESIGN: K KASPAR	OF TOTAL: 58
DRAWN: C CONSOLAC.	JC PROJECT No: 05772-0151-00
CHECKED: N ALFARO	<b>C24</b>

K:\05772\05772-0151-00\_2019\_Small Capacity Constraints II Profile CAD\UTLS.dwg dwt: May 18, 2022

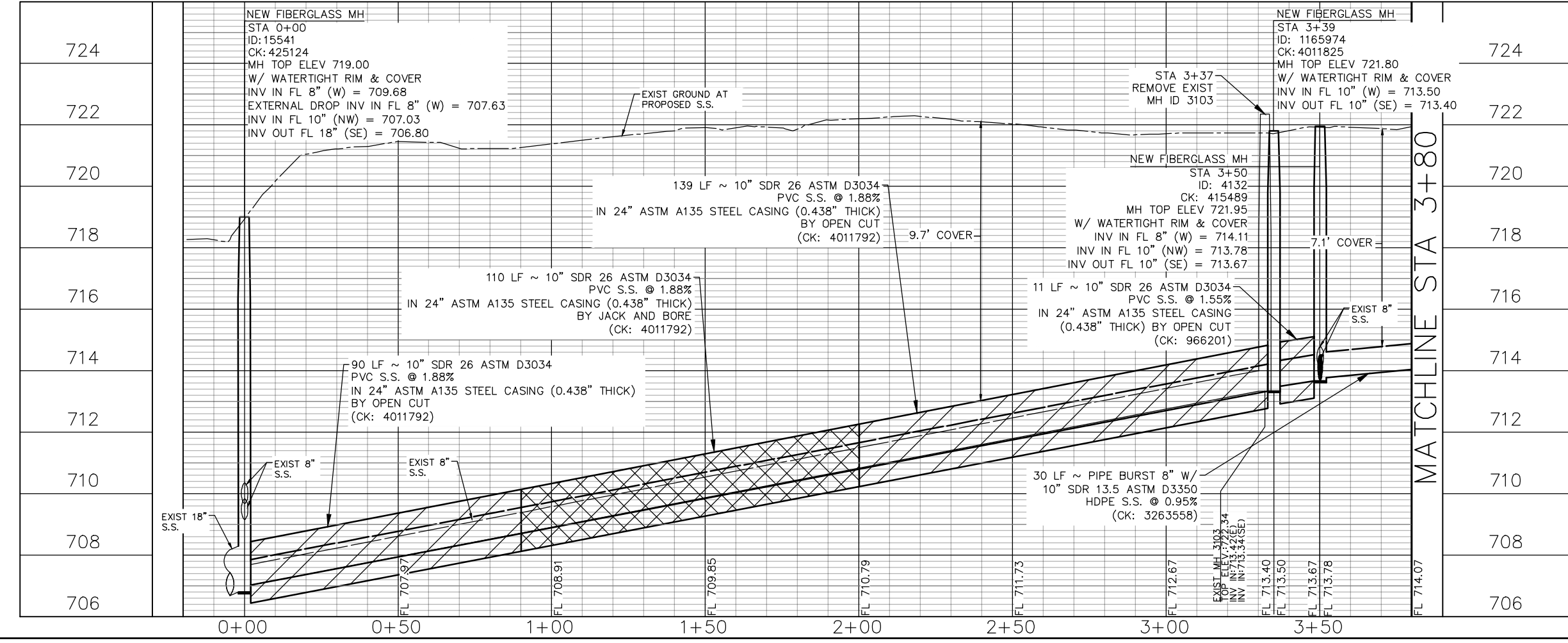


**100-YEAR FLOOD PLAIN**  
 ACCORDING TO MAP No. 48029C0385G OF THE FEDERAL EMERGENCY MANAGEMENT AGENCY'S (FEMA) FLOOD INSURANCE RATE MAP (FIRM) FOR BEXAR COUNTY, TEXAS AND INCORPORATED AREAS, DATED SEPTEMBER 29, 2010, THE AREA DETAILED ON THIS SHEET IS SITUATED WITHIN ZONE "X"; DEFINED AS AREAS OF MINIMAL FLOOD HAZARD. NO BASE FLOOD ELEVATION (BFE) IS DEFINED.

ESTIMATED QUANTITIES			
ITEM	DESCRIPTION	UNIT	QUANTITY
SP507	REMOVE AND REPLACE FENCE	LF	66
515.1	TOPSOIL (COSA SPEC)	CY	33
516.1	BERMUDA SODDING (COSA SPEC)	SY	300
550.1	TRENCH EXCAVATION SAFETY PROTECTION	LF	240
848.6	10-INCH SDR-26 (ASTM D-3034) PVC SANITARY SEWER LINE (6'-10' DEPTH)	LF	68
848.6	10-INCH SDR-26 (ASTM D-3034) PVC SANITARY SEWER LINE (>10' DEPTH)	LF	172
853.6	FIBER-REINFORCED SANITARY SEWER MANHOLE - (4' DIAMETER)	EA	3
856.6	JACKING & BORING	LF	110
856.6	24-INCH STEEL CASING (0.438-INCH THICK)	LF	350
856.6	10-INCH PVC SDR-26 (ASTM D-3034) CARRIER PIPE FOR BORING OR JACKING	LF	110
866.6	SEWER MAIN PRE-TELEVISION INSPECTION (8"-15")	LF	385
866.9	SEWER MAIN POST-TELEVISION INSPECTION (8"-15")	LF	380
900.4	PIPE BURSTING 10-INCH SDR-13.5 (ASTM D-3350) HDPE SANITARY SEWER LINE	LF	30
3001	CPS ENERGY ALLOWANCE FOR POLE BRACING	ALW	1

- NOTES:**
- REFERENCE SUGGESTED BYPASS PUMPING PLAN, SHEETS C15-C17.
  - REFERENCE TREE PROTECTION PLAN, SHEETS TP4-TP7.
  - REFERENCE PAVEMENT RESTORATION PLAN, SHEETS C36-C38.
  - REFERENCE ACCESS STAGING PLAN, SHEETS C9-C11.
  - EXIST SERVICE LATERALS SHOWN IN APPROXIMATE LOCATION. CONTRACTOR TO FIELD VERIFY. RECONNECT ALL EXISTING WASTEWATER SERVICE LATERALS TO PROPOSED REHABILITATED OR REPLACED WASTEWATER LINE. RELAY SERVICE LATERAL WITH NEW PIPE AND NEW CLEANOUT, AND VERTICAL STACKS PER SAWS STANDARD DETAIL DD-854-02. REMOVE & REPLACE FENCES AS NECESSARY FOR RECONSTRUCTION OF SERVICE LATERALS. MATCH EXISTING FENCE SIZE AND TYPE.
  - REFERENCE ABANDONMENT PLAN, SEE SHEET C13.
  - CONTRACTOR TO COORDINATE WITH UNION PACIFIC RAILROAD, COMPLY WITH ALL UNION PACIFIC RAILROAD RULES, REQUIREMENTS & REGULATIONS, AND CONTACT "CALL BEFORE YOU DIG": 1-800-336-9193.
  - ALL SHORING THAT IMPACTS UNION PACIFIC RAILROAD RIGHT-OF-WAY SHALL BE IN ACCORDANCE WITH "GUIDELINES FOR TEMPORARY SHORING".

**SITE 2 BASELINE "E" - UNION PACIFIC RAILROAD ROW**



Professional Engineer Seal for Kyle H. Kaspar, License No. 114362, dated 5/18/2022.

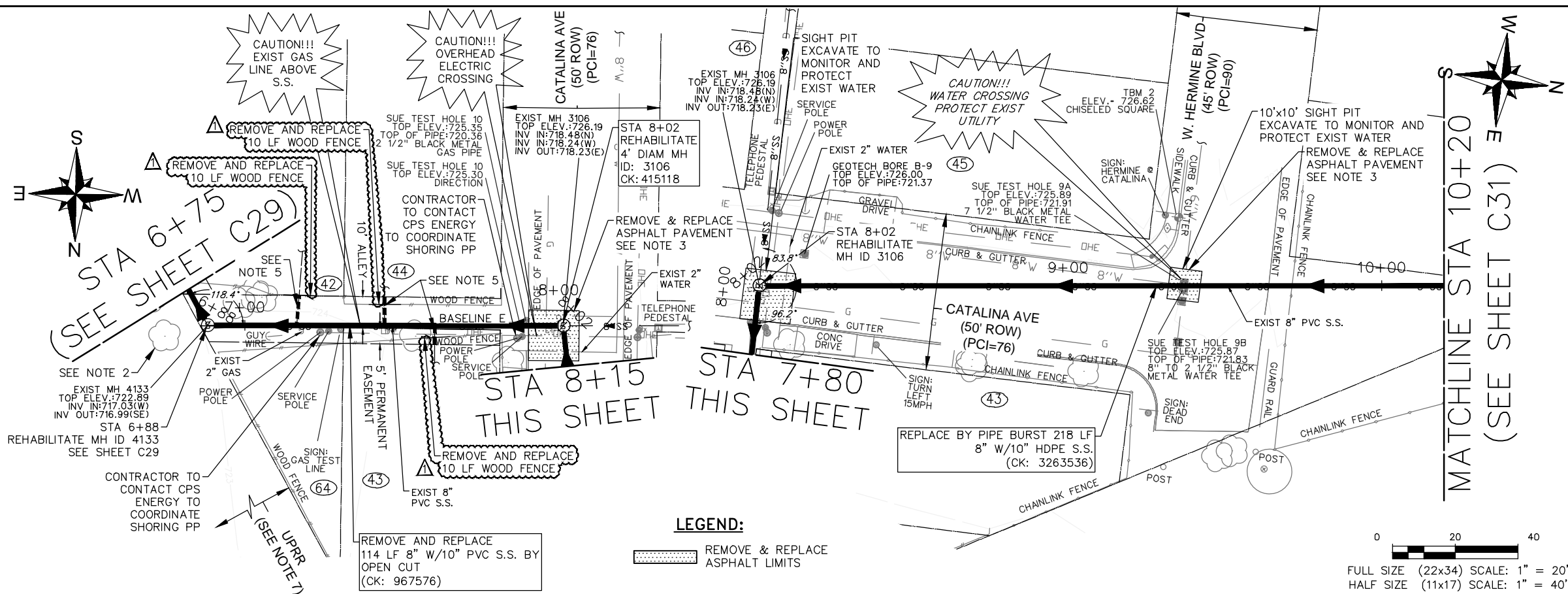
NO.	DATE	ADDENDUM NO.	REVISIONS	APP.
1	5/18/22	ADDENDUM NO. 3		KHK

**JONES CARTER**  
 Texas Board of Professional Engineers and Land Surveyors Registration No. F-23290  
 4350 Lockhill Selma, Suite 100 San Antonio, Texas 78249 210.494.5511

**SITE 2  
 UPRR ADJ PLAN AND PROFILE  
 BL E STA 0+00 TO STA 3+80**

DESIGN PHASE: 100%	SAN ANTONIO WATER SYSTEM	SHEET NO: 32	SHEET TOTAL: 58
SAWS JOB No: 19-4525			
DATE: 3/31/2022	JC PROJECT No: 05772-0151-00	SHEET ID: <b>C28</b>	
DESIGN: K KASPAR	DRAWN: C CONSOLAC. CHECKED: N ALFARO		

K:\05772\05772-0151-00\_2019\_Small Capacity Constraints II Proj\12\_Design Phase\CAD\UTLS.dwg dwt: May 18, 2022



**100-YEAR FLOOD PLAIN**  
 ACCORDING TO MAP No. 48029C0385G OF THE FEDERAL EMERGENCY MANAGEMENT AGENCY'S (FEMA) FLOOD INSURANCE RATE MAP (FIRM) FOR BEXAR COUNTY, TEXAS AND INCORPORATED AREAS, DATED SEPTEMBER 29, 2010, THE AREA DETAILED ON THIS SHEET IS SITUATED WITHIN ZONE "X"; DEFINED AS AREAS OF MINIMAL FLOOD HAZARD. NO BASE FLOOD ELEVATION (BFE) IS DEFINED.

ESTIMATED QUANTITIES			
ITEM	DESCRIPTION	UNIT	QUANTITY
SP507	REMOVE AND REPLACE FENCE	LF	30
515.1	TOPSOIL (COSA SPEC)	CY	14
516.1	BERMUDA SODDING (COSA SPEC)	SY	127
550.1	TRENCH EXCAVATION SAFETY PROTECTION	LF	114
848.6	10-INCH SDR-26 (ASTM D-3034) PVC SANITARY SEWER LINE (6'-10" DEPTH)	LF	114
851.4	EXISTING MANHOLE ADJUSTMENTS	EA	1
854.7	SANITARY SEWER LATERALS, SDR-26 (ASTM D-2241, 150 PSI)	LF	25
854.7	TWO-WAY SANITARY SEWER CLEAN-OUT	EA	3
866.6	SEWER MAIN PRE-TELEVISION INSPECTION (8"-15")	LF	332
866.6	SEWER MAIN POST-TELEVISION INSPECTION (8"-15")	LF	332
900.4	PIPE BURSTING 10-INCH SDR-13.5 (ASTM D-3350) HDPE SANITARY SEWER LINE	LF	218
910.8	MANHOLE REHABILITATION - (4' DIAMETER)	VF	8.0
3001	CPS ENERGY ALLOWANCE FOR POLE BRACING	ALW	1

- NOTES:**
- REFERENCE SUGGESTED BYPASS PUMPING PLAN, SHEETS C15-C17.
  - REFERENCE TREE PROTECTION PLAN, SHEETS TP5-TP7.
  - REFERENCE PAVEMENT RESTORATION PLAN, SHEETS C36-C38.
  - REFERENCE ACCESS STAGING PLAN, SHEETS C9-C11.
  - EXIST SERVICE LATERALS SHOWN IN APPROXIMATE LOCATION. CONTRACTOR TO FIELD VERIFY. RECONNECT ALL EXISTING WASTEWATER SERVICE LATERALS TO PROPOSED REHABILITATED OR REPLACED WASTEWATER LINE. RELAY SERVICE LATERAL WITH NEW PIPE AND NEW CLEANOUT, AND VERTICAL STACKS PER SAWS STANDARD DETAIL DD-854-02. REMOVE & REPLACE FENCES AS NECESSARY FOR RECONSTRUCTION OF SERVICE LATERALS. MATCH EXISTING FENCE SIZE AND TYPE.
  - REFERENCE ABANDONMENT PLAN, SEE SHEET C12.
  - CONTRACTOR TO COORDINATE WITH UNION PACIFIC RAILROAD AND COMPLY WITH ALL UNION PACIFIC RAILROAD RULES, REQUIREMENTS & REGULATIONS.

Professional Engineer Seal for Kyle H. Kaspar, License No. 114362, dated 5/18/2022.

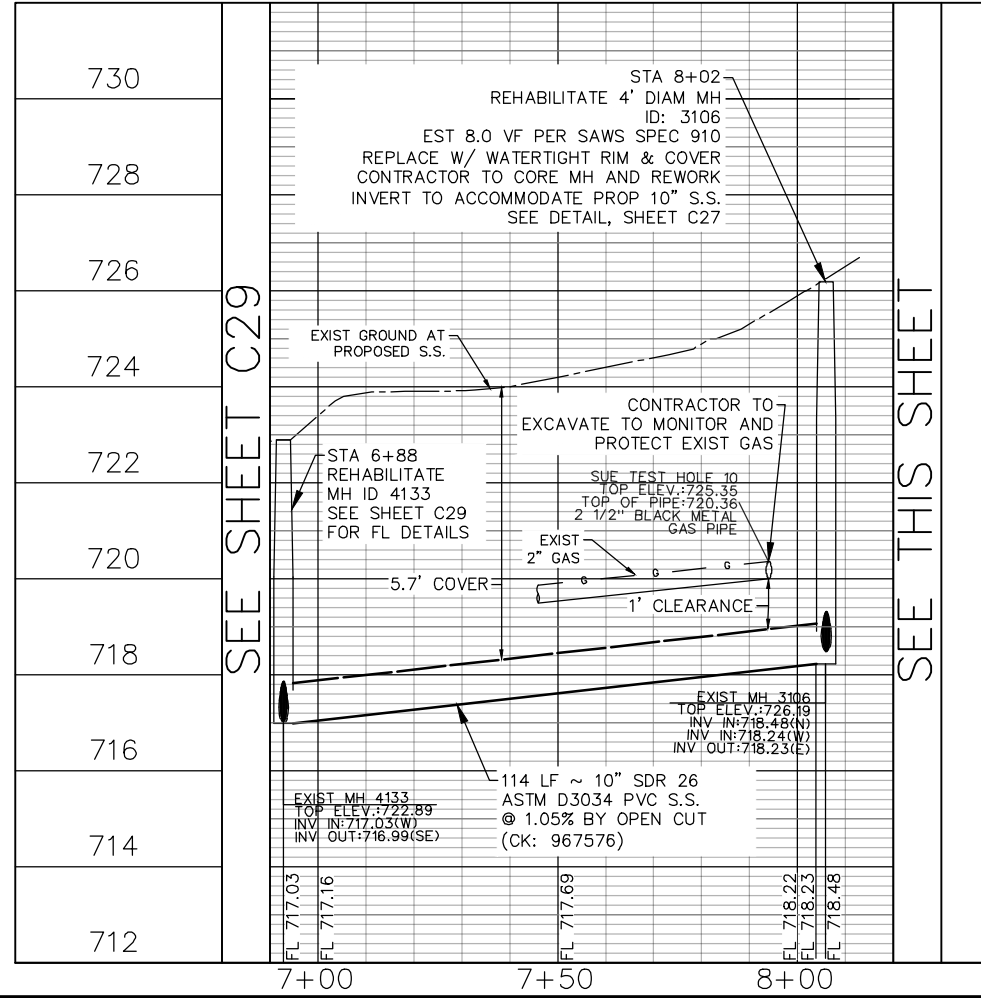
NO.	DATE	REVISIONS	APP.
1	5/18/22	ADDENDUM NO. 3	KHK

**JONES CARTER**  
 Texas Board of Professional Engineers and Land Surveyors Registration No. F-23290  
 4350 Lockhill Selma, Suite 100 San Antonio, Texas 78249 210.494.5511

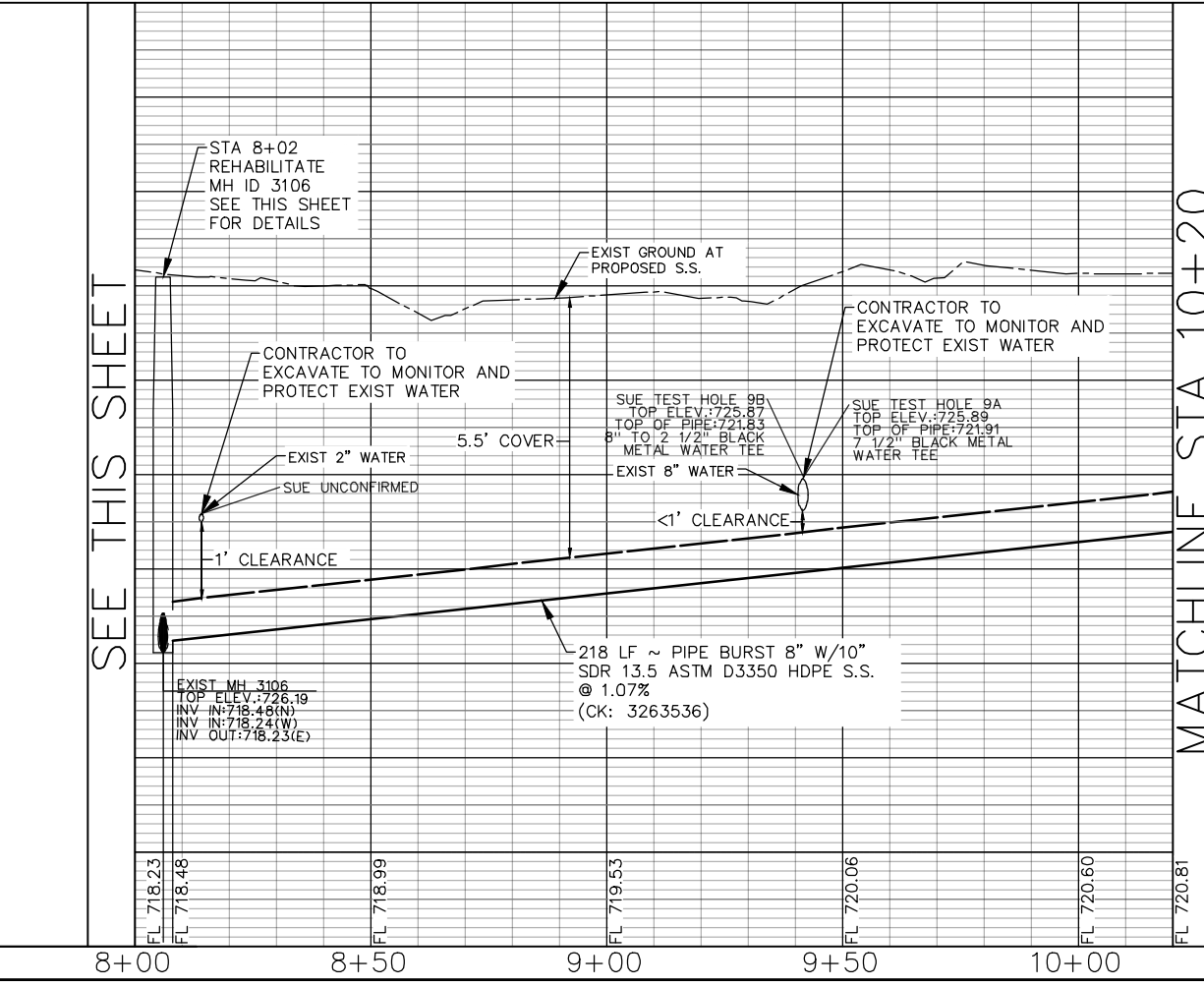
**SITE 2  
 ALLEY AND CATALINA AVE TO  
 UPRR PLAN AND PROFILE  
 BL E STA 6+88 TO 10+20**

DESIGN PHASE: 100%	SAN ANTONIO WATER SYSTEM	SHEET NO: 34	SHEET ID: <b>C30</b>
SAWS JOB No: 19-4525			
DATE: 3/31/2022	DESIGN: K KASPAR	OF TOTAL: 58	
DRAWN: C CONSOLAC.	JC PROJECT No: 05772-0151-00		
CHECKED: N ALFARO			

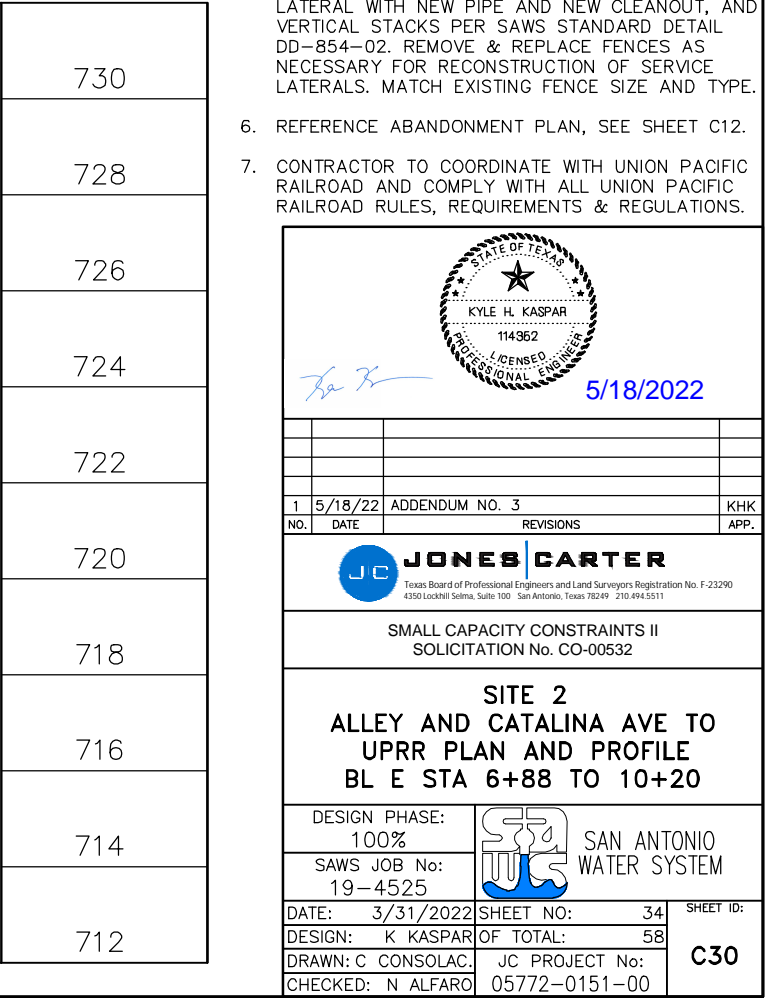
SITE 2 BASELINE "E" - ALLEY: CATALINA AVE TO UPRR



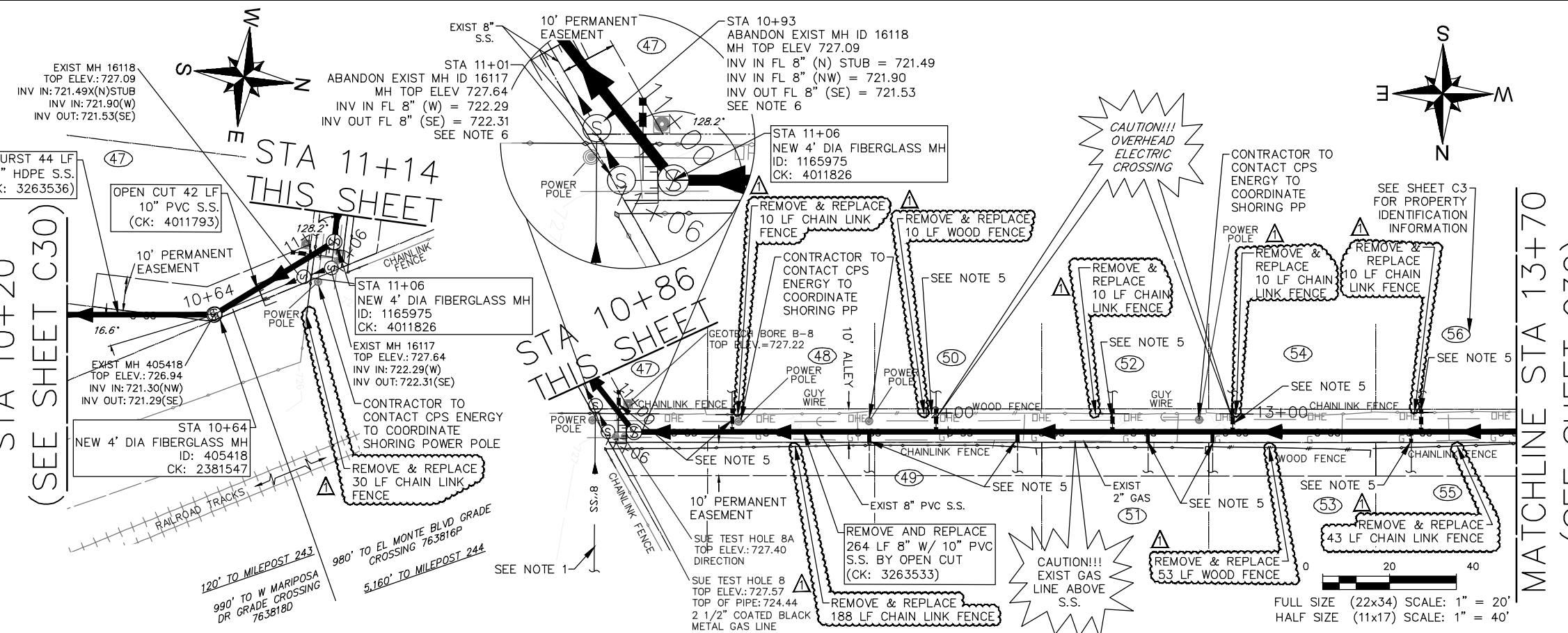
SITE 2 BASELINE "E" - CATALINA AVE



MATCHLINE STA 10+20



K:\05772\05772-0151-00 2019 Small Capacity Constraints II Prop\12 Design Phase\CAD\UTLS.dwg dwt: May 18, 2022



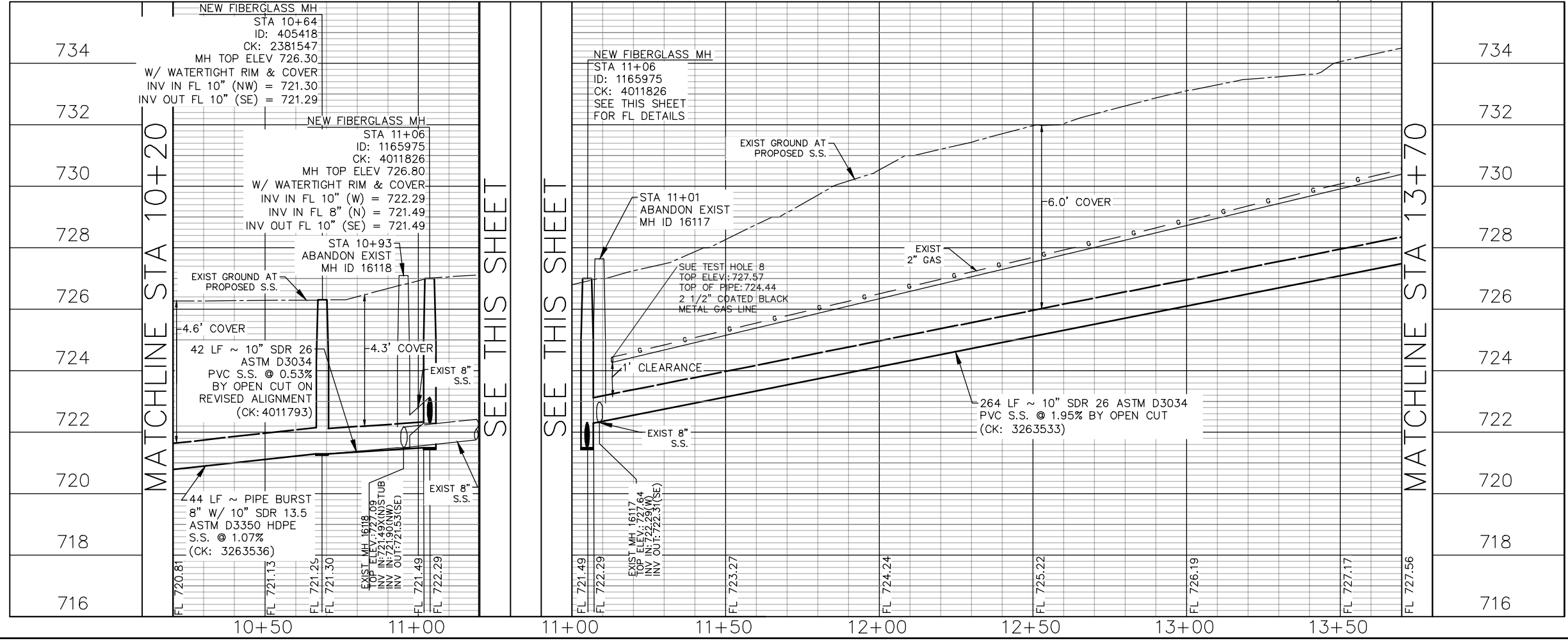
**100-YEAR FLOOD PLAIN**  
 ACCORDING TO MAP No. 48029C0385G OF THE FEDERAL EMERGENCY MANAGEMENT AGENCY'S (FEMA) FLOOD INSURANCE RATE MAP (FIRM) FOR BEXAR COUNTY, TEXAS AND INCORPORATED AREAS, DATED SEPTEMBER 29, 2010, THE AREA DETAILED ON THIS SHEET IS SITUATED WITHIN ZONE "X"; DEFINED AS AREAS OF MINIMAL FLOOD HAZARD. NO BASE FLOOD ELEVATION (BFE) IS DEFINED.

ESTIMATED QUANTITIES			
ITEM	DESCRIPTION	UNIT	QUANTITY
SP507	REMOVE AND REPLACE FENCE	LF	364
515.1	TOPSOIL	CY	38
516.1	BERMUDA SODDING (COSA SPEC)	SY	340
550.1	TRENCH EXCAVATION SAFETY PROTECTION	LF	306
848.6	10-INCH SDR-26 (ASTM D-3034) PVC SANITARY SEWER LINE (0'-6" DEPTH)	LF	42
848.6	10-INCH SDR-26 (ASTM D-3034) PVC SANITARY SEWER LINE (6'-10" DEPTH)	LF	264
853.6	FIBER-REINFORCED SANITARY SEWER MANHOLE - (4' DIAMETER)	EA	2
854.7	SANITARY SEWER LATERALS, SDR-26 (ASTM D-2241, 150 PSI)	LF	67
854.7	TWO-WAY SANITARY SEWER CLEAN-OUT	EA	11
866.6	SEWER MAIN PRE-TELEVISION INSPECTION (8"-15")	LF	353
866.6	SEWER MAIN POST-TELEVISION INSPECTION (8"-15")	LF	350
900.4	PIPE BURSTING 10-INCH SDR-13.5 (ASTM D-3350) HDPE SANITARY SEWER LINE	LF	44
3001	CPS ENERGY ALLOWANCE FOR POLE BRACING	ALW	1

- NOTES:**
- REFERENCE SUGGESTED BYPASS PUMPING PLAN, SHEETS C15-C17.
  - REFERENCE TREE PROTECTION PLAN, SHEETS TP4-TP7.
  - REFERENCE PAVEMENT RESTORATION PLAN, SHEETS C36-C38.
  - REFERENCE ACCESS STAGING PLAN, SHEETS C9-C11.
  - EXIST SERVICE LATERALS SHOWN IN APPROXIMATE LOCATION. CONTRACTOR TO FIELD VERIFY, RECONNECT ALL EXISTING WASTEWATER SERVICE LATERALS TO PROPOSED REHABILITATED OR REPLACED WASTEWATER LINE. RELAY SERVICE LATERAL WITH NEW PIPE AND NEW CLEANOUT, AND VERTICAL STACKS PER SAWS STANDARD DETAIL DD-854-02. REMOVE & REPLACE FENCES AS NECESSARY FOR RECONSTRUCTION OF SERVICE LATERALS. MATCH EXISTING FENCE SIZE AND TYPE.
  - REFERENCE ABANDONMENT PLAN, SEE SHEET C13.
  - CONTRACTOR TO COORDINATE WITH UNION PACIFIC RAILROAD AND COMPLY WITH ALL UNION PACIFIC RAILROAD RULES, REQUIREMENTS & REGULATIONS.

SITE 2 BASELINE "E" - UPRR ROW

SITE 2 BASELINE "E" - ALLEY: SANTA PAULA AVE TO UPRR



5/18/2022

1	5/18/22	ADDENDUM NO. 3	KHK
NO.	DATE	REVISIONS	APP.

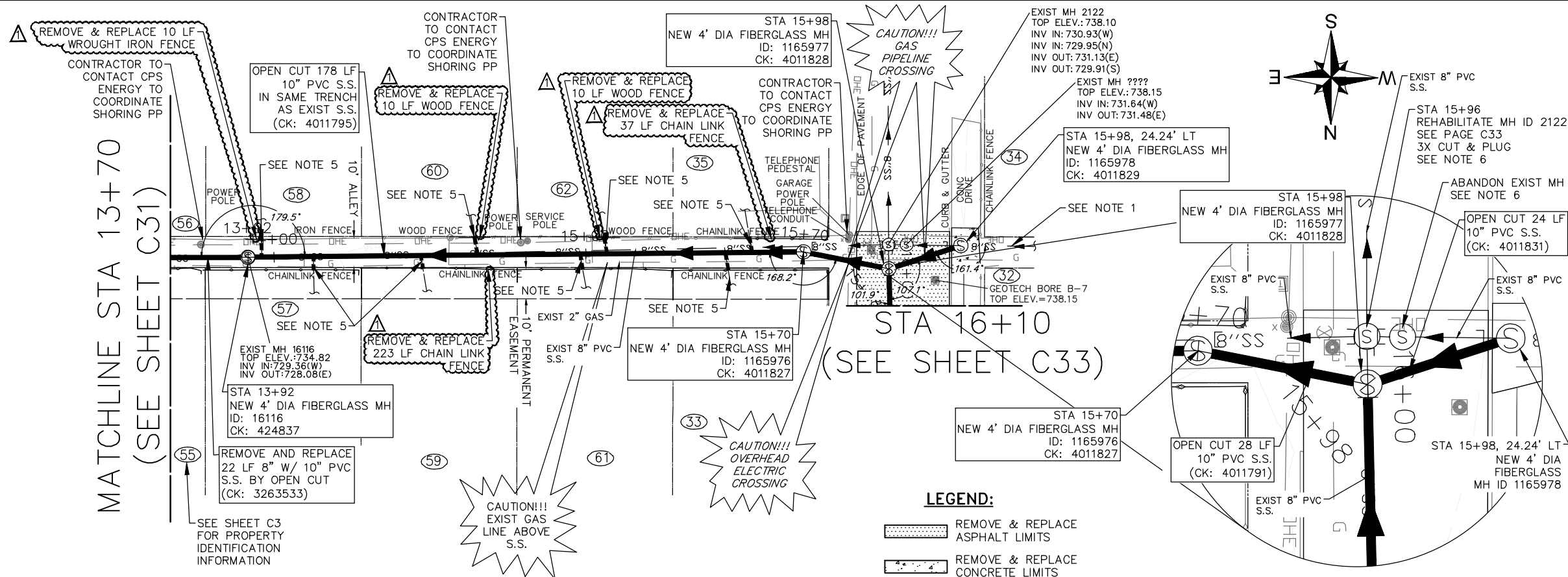
SMALL CAPACITY CONSTRAINTS II  
SOLICITATION No. CO-00532

**SITE 2 UPRR ROW AND ALLEY  
PLAN AND PROFILE  
BL E STA 10+20 TO STA 13+70**

DESIGN PHASE: 100%		SHEET NO: 35	SHEET ID: <b>C31</b>
SAWS JOB No: 19-4525		DESIGN: K KASPAR	
DATE: 3/31/2022	JC PROJECT No:	05772-0151-00	
DRAWN: C CONSOLAC.	CHECKED: N ALFARO		

K:\05772\05772-0151-00-2019 Small Capacity Constraints II Profile Design Phase\CAD\UTLS.dwg dwt: May 18, 2022

K:\05772\05772-0151-00 2019 Small Capacity Constraints II Prop 12 Design Phase CAD\UTLS.dwg dwt: May 18, 2022

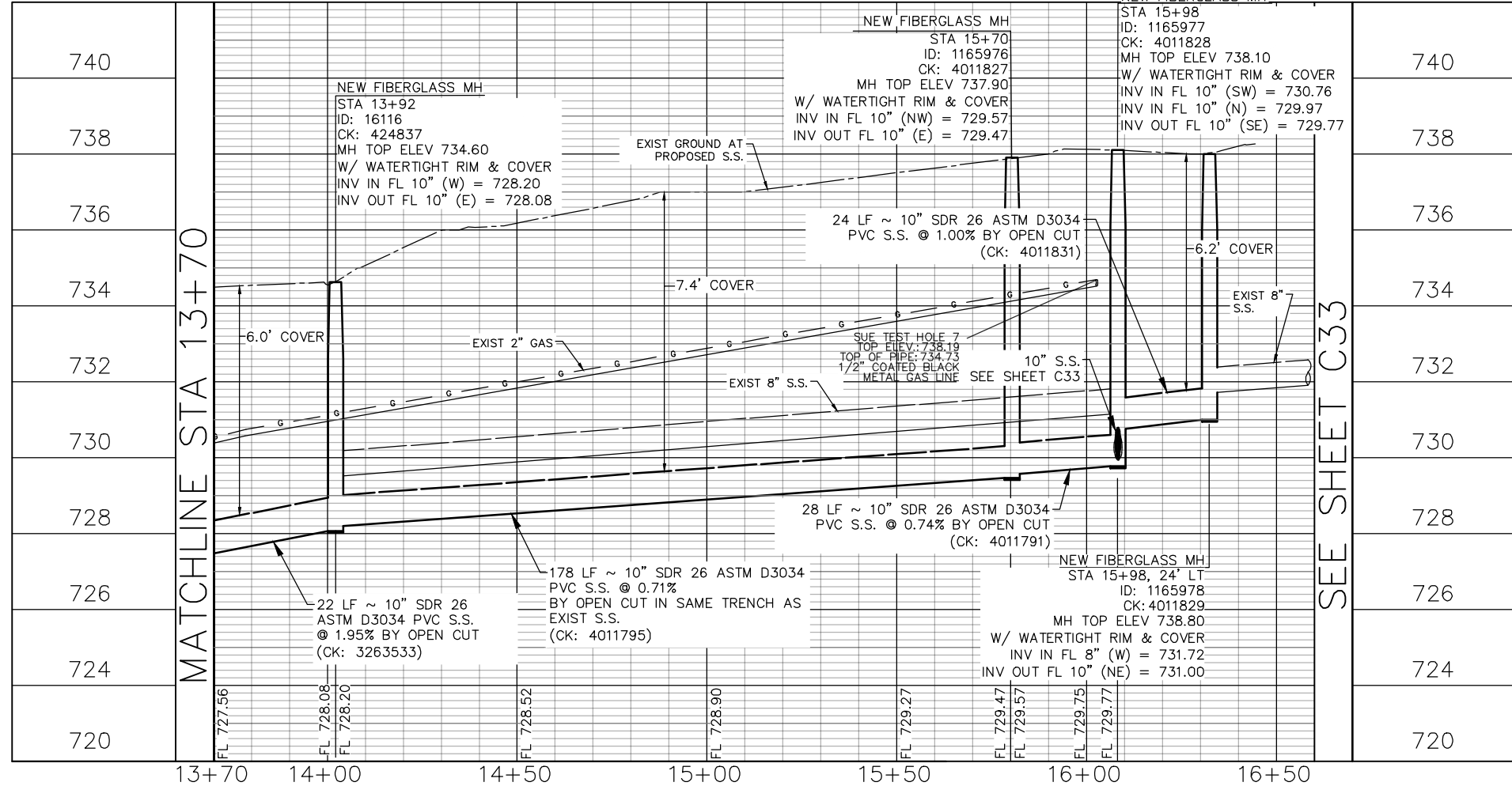


**100-YEAR FLOOD PLAIN**  
 ACCORDING TO MAP No. 48029C0385G OF THE FEDERAL EMERGENCY MANAGEMENT AGENCY'S (FEMA) FLOOD INSURANCE RATE MAP (FIRM) FOR BEXAR COUNTY, TEXAS AND INCORPORATED AREAS, DATED SEPTEMBER 29, 2010, THE AREA DETAILED ON THIS SHEET IS SITUATED WITHIN ZONE "X"; DEFINED AS AREAS OF MINIMAL FLOOD HAZARD. NO BASE FLOOD ELEVATION (BFE) IS DEFINED.

ESTIMATED QUANTITIES			
ITEM	DESCRIPTION	UNIT	QUANTITY
SP507	REMOVE AND REPLACE FENCE	LF	290
515.1	TOPSOIL (COSA SPEC)	CY	31
516.1	BERMUDA SODDING (COSA SPEC)	SY	280
550.1	TRENCH EXCAVATION SAFETY PROTECTION	LF	252
848.6	10-INCH SDR-26 (ASTM D-3034) PVC SANITARY SEWER LINE (6'-10' DEPTH)	LF	252
853.6	FIBER-REINFORCED SANITARY SEWER MANHOLE - (4' DIAMETER)	EA	4
854.7	SANITARY SEWER LATERALS, SDR-26 (ASTM D-2241, 150 PS)	LF	39
854.7	TWO-WAY SANITARY SEWER CLEAN-OUT	EA	8
866.6	SEWER MAIN PRE-TELEVISION INSPECTION (8"-15")	LF	258
866.6	SEWER MAIN POST-TELEVISION INSPECTION (8"-15")	LF	252
3001	CPS ENERGY ALLOWANCE FOR POLE BRACING	ALW	1

- NOTES:**
- REFERENCE SUGGESTED BYPASS PUMPING PLAN, SHEETS C15-C17.
  - REFERENCE TREE PROTECTION PLAN, SHEETS TP4-TP7.
  - REFERENCE PAVEMENT RESTORATION PLAN, SHEETS C36-C38.
  - REFERENCE ACCESS STAGING PLAN, SHEETS C9-C11.
  - EXIST SERVICE LATERALS SHOWN IN APPROXIMATE LOCATION. CONTRACTOR TO FIELD VERIFY. RECONNECT ALL EXISTING WASTEWATER SERVICE LATERALS TO PROPOSED REHABILITATED OR REPLACED WASTEWATER LINE. RELAY SERVICE LATERAL WITH NEW PIPE AND NEW CLEANOUT, AND VERTICAL STACKS PER SAWS STANDARD DETAIL DD-854-02. REMOVE & REPLACE FENCES AS NECESSARY FOR RECONSTRUCTION OF SERVICE LATERALS. MATCH EXISTING FENCE SIZE AND TYPE.
  - REFERENCE ABANDONMENT PLAN, SEE SHEET C13.
  - CONTRACTOR TO COORDINATE WITH UNION PACIFIC RAILROAD AND COMPLY WITH ALL UNION PACIFIC RAILROAD RULES, REQUIREMENTS & REGULATIONS.

**SITE 2 BASELINE "E" - ALLEY: UPRR TO SANTA PAULA AVE**



0 20 40  
 FULL SIZE (22x34) SCALE: 1" = 20'  
 HALF SIZE (11x17) SCALE: 1" = 40'  
 FULL SIZE (22x34) VERTICAL SCALE: 1" = 2'  
 HALF SIZE (11x17) VERTICAL SCALE: 1" = 4'

KYLE H. KASPAR  
 114362  
 LICENSED PROFESSIONAL ENGINEER  
 5/18/2022

NO.	DATE	REVISIONS	APP.
1	5/18/22	ADDENDUM NO. 3	KHK

**JONES CARTER**  
Texas Board of Professional Engineers and Land Surveyors Registration No. F-23290  
 4350 Lockhill Selma, Suite 100 San Antonio, Texas 78249 210.494.5511  
 SMALL CAPACITY CONSTRAINTS II  
 SOLICITATION No. CO-00532

**SITE 2  
 ALLEY: UPRR TO SANTA PAULA  
 PLAN AND PROFILE  
 BL E STA 13+70 TO STA 15+98**

DESIGN PHASE: 100%		SHEET NO: 36	SHEET ID: <b>C32</b>
SAWS JOB No: 19-4525			
DATE: 3/31/2022	JC PROJECT No: 05772-0151-00		
DRAWN: C CONSOLAC. CHECKED: N ALFARO			